

IFIT-5 Rabbit pAb

CatalogNo: YT2276

Key Features

Host Species

- Rabbit

Reactivity

- Human

Applications

- WB,ELISA

MW

- 50kD (Observed)

Isotype

- IgG

Recommended Dilution Ratios

WB 1:500-1:2000

ELISA 1:40000

Not yet tested in other applications.

Storage

Storage*

-15°C to -25°C/1 year(Do not lower than -25°C)

Formulation

Liquid in PBS containing 50% glycerol, 0.5% BSA and 0.02% sodium azide.

Basic Information

Clonality

Polyclonal

Immunogen Information

Immunogen

The antiserum was produced against synthesized peptide derived from human IFIT5. AA range:281-330

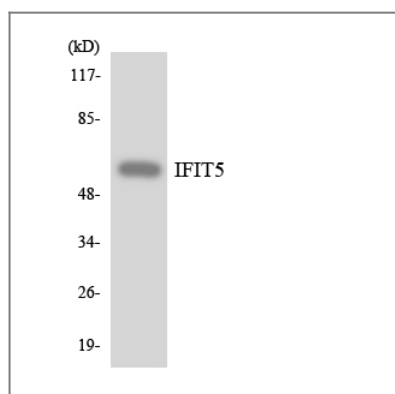
Specificity

IFIT-5 Polyclonal Antibody detects endogenous levels of IFIT-5 protein.

Target Information

Gene name	IFIT5		
Protein Name	Interferon-induced protein with tetratricopeptide repeats 5		
	Organism	Gene ID	UniProt ID
	Human	24138 ;	Q13325 ;
Cellular Localization	Cell projection, ruffle membrane . Colocalized with DDX58/RIG-I at cell surface ruffles. Localizes to actin-rich protrusions from the apical cell surface.		
Tissue specificity	Pancreas,Spleen,		
Function	induction:By interferons.,similarity:Belongs to the IFIT family.,similarity:Contains 8 TPR repeats.,		

Validation Data



Western blot analysis of the lysates from HepG2 cells using IFIT5 antibody.

Contact information

Orders: order@immunoway.com
 Support: tech@immunoway.com
 Telephone: 877-594-3616 (Toll Free), 408-747-0185
 Website: <http://www.immunoway.com>
 Address: 2200 Ringwood Ave San Jose, CA 95131 USA



Please scan the QR code to access additional product information:
IFIT-5 Rabbit pAb

For Research Use Only. Not for Use in Diagnostic Procedures.

[Antibody](#) | [ELISA Kits](#) | [Protein](#) | [Reagents](#)