

HSP β 2 Rabbit pAb

CatalogNo: YT2247

| Key Features

Host Species

- Rabbit

Reactivity

- Human, Mouse, Rat

Applications

- WB, IHC, IF, ELISA

MW

- 24kD (Observed)

Isotype

- IgG

| Recommended Dilution Ratios

WB 1:500-1:2000

IHC 1:100-1:300

IF 1:200-1:1000

ELISA 1:40000

Not yet tested in other applications.

| Storage

Storage*

-15°C to -25°C/1 year (Do not lower than -25°C)

Formulation

Liquid in PBS containing 50% glycerol, 0.5% BSA and 0.02% sodium azide.

| Basic Information

Clonality

Polyclonal

| Immunogen Information

Immunogen

The antiserum was produced against synthesized peptide derived from human HSPB2. AA range: 121-170

Specificity

HSP β 2 Polyclonal Antibody detects endogenous levels of HSP β 2 protein.

Target Information

Gene name HSPB2

Protein Name Heat shock protein beta-2

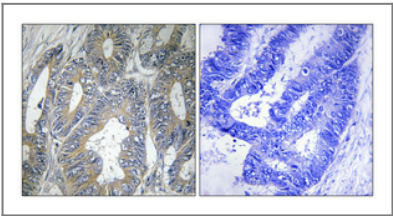
Organism	Gene ID	UniProt ID
Human	3316 ;	Q16082 ;
Mouse	69253 ;	Q99PR8 ;
Rat	161476 ;	Q35878 ;

Cellular Localization Cytoplasm . Nucleus . Localizes to nuclear foci.

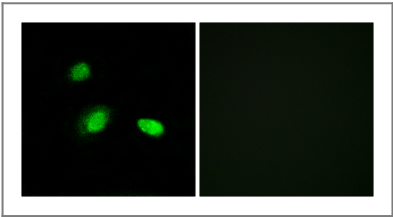
Tissue specificity Expressed preferentially in skeletal muscle and heart but not in the lens.

Function similarity:Belongs to the small heat shock protein (HSP20) family.,subunit:Associates specifically with myotonic dystrophy protein kinase (DMPK).,tissue specificity:Expressed preferentially in skeletal muscle and heart but not in the lens.,

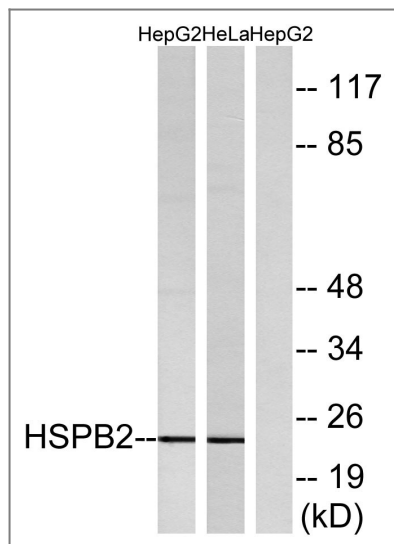
Validation Data



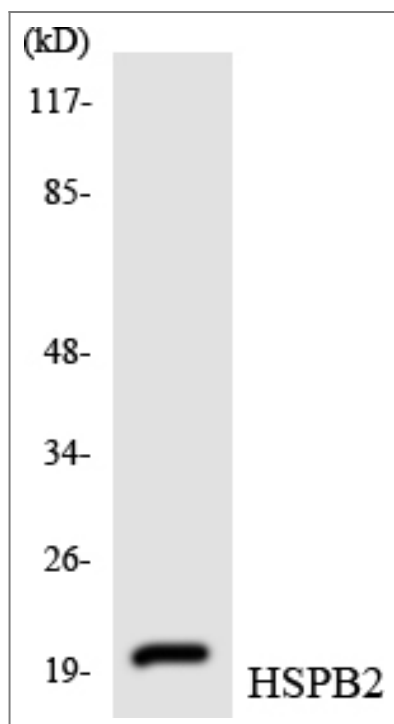
Immunohistochemical analysis of paraffin-embedded Human colon cancer. Antibody was diluted at 1:100(4° overnight). High-pressure and temperature Tris-EDTA,pH8.0 was used for antigen retrieval. Negative contrl (right) obtained from antibody was pre-absorbed by immunogen peptide.



Immunofluorescence analysis of A549 cells, using HSPB2 Antibody. The picture on the right is blocked with the synthesized peptide.



Western blot analysis of lysates from HepG2 and HeLa cells, using HSPB2 Antibody. The lane on the right is blocked with the synthesized peptide.



Western blot analysis of the lysates from HeLa cells using HSPB2 antibody.

Contact information

Orders: order@immunoway.com
 Support: tech@immunoway.com
 Telephone: 877-594-3616 (Toll Free), 408-747-0185
 Website: <http://www.immunoway.com>
 Address: 2200 Ringwood Ave San Jose, CA 95131 USA



Please scan the QR code to access additional product information:
HSP β2 Rabbit pAb