

HSF2 Rabbit pAb

CatalogNo: YT2237

Key Features

Host Species

- Rabbit

Reactivity

- Human, Mouse, Rat

Applications

- WB, IHC, IF, ELISA

MW

- 85kD (Observed)

Isotype

- IgG

Recommended Dilution Ratios

WB 1:500-1:2000

IHC 1:100-1:300

ELISA 1:20000

IF 1:50-200

Storage

Storage*

-15°C to -25°C/1 year (Do not lower than -25°C)

Formulation

Liquid in PBS containing 50% glycerol, 0.5% BSA and 0.02% sodium azide.

Basic Information

Clonality

Polyclonal

Immunogen Information

Immunogen

The antiserum was produced against synthesized peptide derived from human HSF2. AA range: 401-450

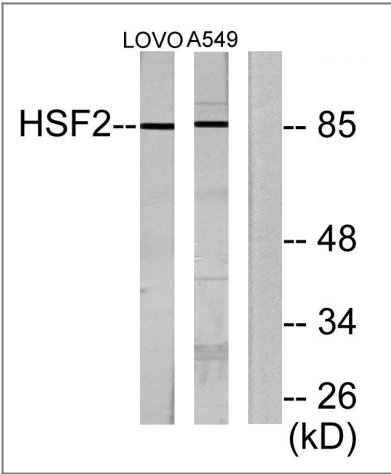
Specificity

HSF2 Polyclonal Antibody detects endogenous levels of HSF2 protein.

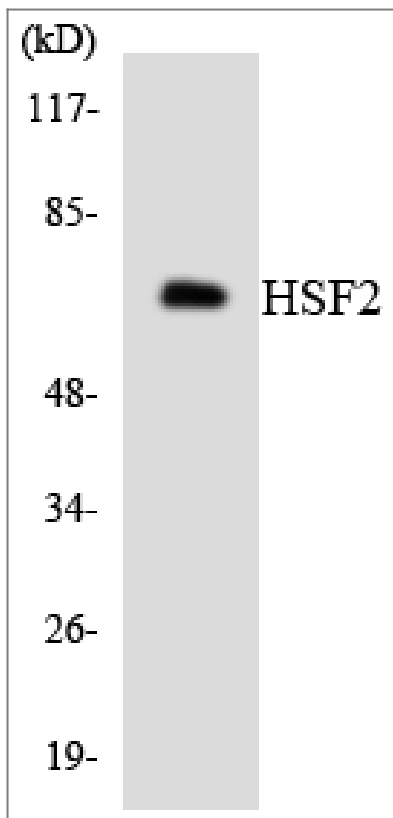
Target Information

Gene name	HSF2		
Protein Name	Heat shock factor protein 2		
	Organism	Gene ID	UniProt ID
	Human	3298 ;	Q03933 ;
	Mouse	15500 ;	P38533 ;
Cellular Localization	Cytoplasm . Nucleus . Cytoplasmic during normal growth and moves to the nucleus upon activation.		
Tissue specificity	Bladder,Brain,PCR rescued clones,Testis,		
Function	Function:DNA-binding protein that specifically binds heat shock promoter elements (HSE) and activates transcription. In higher eukaryotes, HSF is unable to bind to the HSE unless the cells are heat shocked.,similarity:Belongs to the HSF family.,subcellular location:Cytoplasmic during normal growth and moves to the nucleus upon activation.,subunit:DNA-binding homotrimer in stressed or heat shocked cells, otherwise found as a homodimer.,		

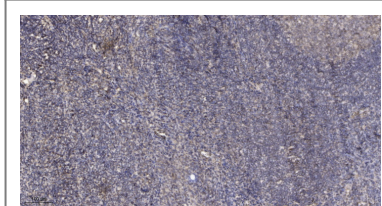
| Validation Data



Western blot analysis of lysates from LOVO and A549 cells, using HSF2 Antibody. The lane on the right is blocked with the synthesized peptide.



Western blot analysis of the lysates from HeLa cells using HSF2 antibody.



Immunohistochemical analysis of paraffin-embedded human tonsil. 1, Antibody was diluted at 1:200(4° overnight). 2, Tris-EDTA,pH9.0 was used for antigen retrieval. 3,Secondary antibody was diluted at 1:200(room temperature, 45min).

Contact information

Orders: order@immunoway.com
Support: tech@immunoway.com
Telephone: 877-594-3616 (Toll Free), 408-747-0185
Website: <http://www.immunoway.com>
Address: 2200 Ringwood Ave San Jose, CA 95131 USA



Please scan the QR code to access additional product information:
HSF2 Rabbit pAb

For Research Use Only. Not for Use in Diagnostic Procedures.

[Antibody](#) | [ELISA Kits](#) | [Protein](#) | [Reagents](#)