

Hox-A1/B1/D1 Rabbit pAb

CatalogNo: YT2209

Key Features

Host Species

- Rabbit

Reactivity

- Human, Mouse

Applications

- IHC, IF, ELISA

MW

- 32kD (Calculated)

Isotype

- IgG

Recommended Dilution Ratios

IHC 1:100-1:300

ELISA 1:10000

IF 1:50-200

Storage

Storage* -15°C to -25°C/1 year (Do not lower than -25°C)

Formulation Liquid in PBS containing 50% glycerol, 0.5% BSA and 0.02% sodium azide.

Basic Information

Clonality Polyclonal

Immunogen Information

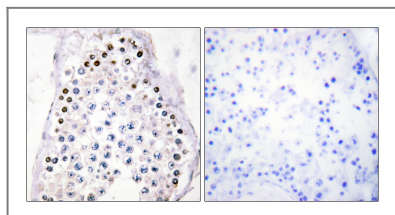
Immunogen The antiserum was produced against synthesized peptide derived from human HOXA1/B1/D1. AA range: 216-265

Specificity Hox-A1/B1/D1 Polyclonal Antibody detects endogenous levels of Hox-A1/B1/D1 protein.

Target Information

Gene name	HOXB1		
Protein Name	Homeobox protein Hox-B1		
	Organism	Gene ID	UniProt ID
	Human	3211 ; 3198 ; 3231 ;	P14653 ; P49639 ; Q9GZZ0 ;
	Mouse	15407 ;	
Cellular Localization	Nucleus.		
Tissue specificity	PCR rescued clones,		
Function	Function:Sequence-specific transcription factor which is part of a developmental regulatory system that provides cells with specific positional identities on the anterior-posterior axis. Acts on the anterior body structures.,polymorphism:The two common alleles; HOX1B*A and HOX1B*B have a frequency of 78.8% and 21.2% respectively.,similarity:Belongs to the Antp homeobox family. Labial subfamily.,similarity:Contains 1 homeobox DNA-binding domain.,		

Validation Data



Immunohistochemistry analysis of paraffin-embedded human testis tissue, using HOXA1/B1/D1 Antibody. The picture on the right is blocked with the synthesized peptide.

Contact information

Orders: order@immunoway.com
 Support: tech@immunoway.com
 Telephone: 877-594-3616 (Toll Free), 408-747-0185
 Website: <http://www.immunoway.com>
 Address: 2200 Ringwood Ave San Jose, CA 95131 USA



Please scan the QR code
 to access additional
 product information:
Hox-A1/B1/D1
Rabbit pAb

For Research Use Only. Not for Use in Diagnostic Procedures.

[Antibody](#) | [ELISA Kits](#) | [Protein](#) | [Reagents](#)