

## hnRNP A2/B1 Rabbit pAb

CatalogNo: YT2193

### Key Features

#### Host Species

- Rabbit

#### Reactivity

- Human, Mouse

#### Applications

- WB, IHC, IF, ELISA

#### MW

- 36kD, 38kD (Observed)

#### Isotype

- IgG

### Recommended Dilution Ratios

**WB 1:500-1:2000**

**IHC 1:100-1:300**

**IF 1:200-1:1000**

**ELISA 1:20000**

**Not yet tested in other applications.**

### Storage

#### Storage\*

-15°C to -25°C/1 year (Do not lower than -25°C)

#### Formulation

Liquid in PBS containing 50% glycerol, 0.5% BSA and 0.02% sodium azide.

### Basic Information

#### Clonality

Polyclonal

### Immunogen Information

#### Immunogen

The antiserum was produced against synthesized peptide derived from human hnRNP A2/B1. AA range: 1-50

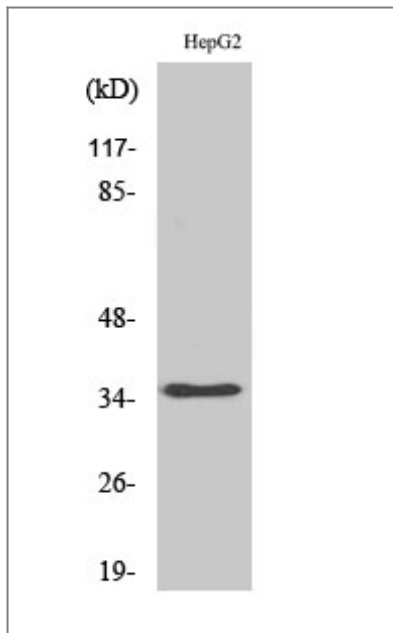
#### Specificity

hnRNP A2/B1 Polyclonal Antibody detects endogenous levels of hnRNP A2/B1 protein.

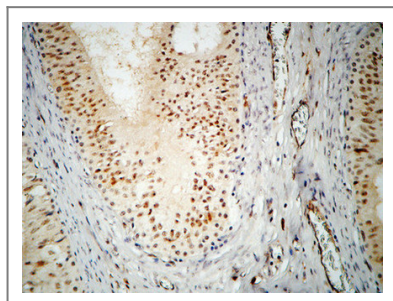
## | Target Information

Gene name	HNRNPA2B1		
Protein Name	Heterogeneous nuclear ribonucleoproteins A2/B1		
	Organism	Gene ID	UniProt ID
	Human	<a href="#">3181</a> ;	<a href="#">P22626</a> ;
	Mouse	<a href="#">53379</a> ;	<a href="#">O88569</a> ;
Cellular Localization	Nucleus . Nucleus, nucleoplasm . Cytoplasm . Cytoplasmic granule . Secreted, extracellular exosome . Localized in cytoplasmic mRNP granules containing untranslated mRNAs (PubMed:17289661). Component of ribonucleosomes (PubMed:17289661). Not found in the nucleolus (PubMed:17289661). Found in exosomes following sumoylation (PubMed:24356509). . ; [Isoform A2]: Nucleus . Cytoplasm . Predominantly nucleoplasmic, however is also found in the cytoplasm of cells in some tissues (PubMed:17289661). .		
Tissue specificity	Brain,Cajal-Retzius cell,Cervix carcinoma,Epitheliu		
Function	Function:Involved with pre-mRNA processing. Forms complexes (ribonucleosomes) with at least 20 other different hnRNP and heterogeneous nuclear RNA in the nucleous.,similarity:Contains 2 RRM (RNA recognition motif) domains.,subcellular location:Component of ribonucleosomes. Predominantly nucleoplasmic, however isoform A2 is also found in the cytoplasm of cells in some tissues. Not found in the nucleolus.,subunit:Identified in the spliceosome C complex, at least composed of AQR, ASCC3L1, C19orf29, CDC40, CDC5L, CRNKL1, DDX23, DDX41, DDX48, DDX5, DGCR14, DHX35, DHX38, DHX8, EFTUD2, FRG1, GPATC1, HNRNPA1, HNRNPA2B1, HNRPA3, HNRNPC, HNRPF, HNRPH1, HNRPK, HNRPM, HNRNPR, HNRNPU, KIAA1160, KIAA1604, LSM2, LSM3, MAGOH, MORG1, PABPC1, PLRG1, PNN, PPIE, PPIL1, PPIL3, PPWD1, PRPF19, PRPF4B, PRPF6, PRPF8, RALY, RBM22, RBM8A, RBMX, SART1, SF3A1, SF3A2, SF3A3, SF3B1, SF3B2, SF3B3, SFRS1, SKIV2L2, SNRPA1, SNRPB, SNRPB2, SNRPD1, SNRPD2, SNRPD3, SNRPE, SNRPF, SNRPG, SNW1, SRRM1, SRRM2, SYF2, SYNCRIP, TFIP11, THOC4, U2AF1, WDR57, XAB2 and ZCCHC8.,		

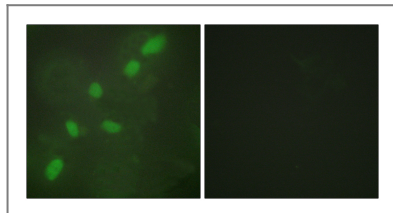
## | Validation Data



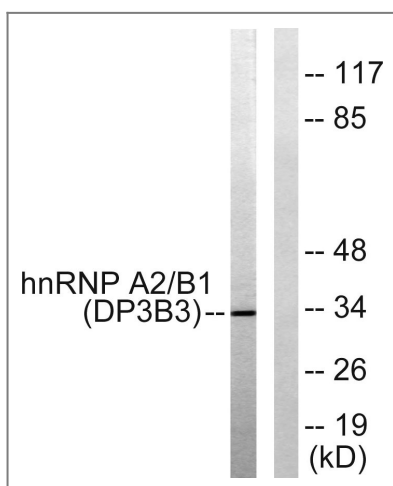
Western Blot analysis of various cells using hnRNP A2/B1 Polyclonal Antibody diluted at 1:1000



Immunohistochemical analysis of paraffin-embedded Human testis. 1, Antibody was diluted at 1:200(4° overnight). 2, High-pressure and temperature EDTA, pH8.0 was used for antigen retrieval. 3, Secondary antibody was diluted at 1:200(room temperature, 30min).



Immunofluorescence analysis of HeLa cells, using hnRNP A2/B1 Antibody. The picture on the right is blocked with the synthesized peptide.



Western blot analysis of lysates from HepG2 cells, using hnRNP A2/B1 Antibody. The lane on the right is blocked with the synthesized peptide.

## Contact information

Orders: order@immunoway.com  
Support: tech@immunoway.com  
Telephone: 877-594-3616 (Toll Free), 408-747-0185  
Website: <http://www.immunoway.com>  
Address: 2200 Ringwood Ave San Jose, CA 95131 USA



Please scan the QR code  
to access additional  
product information:  
**hnRNP A2/B1 Rabbit  
pAb**

---

For Research Use Only. Not for Use in Diagnostic Procedures.

[Antibody](#) | [ELISA Kits](#) | [Protein](#) | [Reagents](#)