

HKR1 Rabbit pAb

CatalogNo: YT2176

Key Features

Host Species

- Rabbit

Reactivity

- Human

Applications

- WB,IHC,IF,ELISA

MW

- 73kD (Observed)

Isotype

- IgG

Recommended Dilution Ratios

WB 1:500-1:2000

IHC 1:100-1:300

IF 1:200-1:1000

ELISA 1:5000

Not yet tested in other applications.

Storage

Storage*

-15°C to -25°C/1 year(Do not lower than -25°C)

Formulation

Liquid in PBS containing 50% glycerol, 0.5% BSA and 0.02% sodium azide.

Basic Information

Clonality

Polyclonal

Immunogen Information

Immunogen

The antiserum was produced against synthesized peptide derived from human HKR1. AA range:141-190

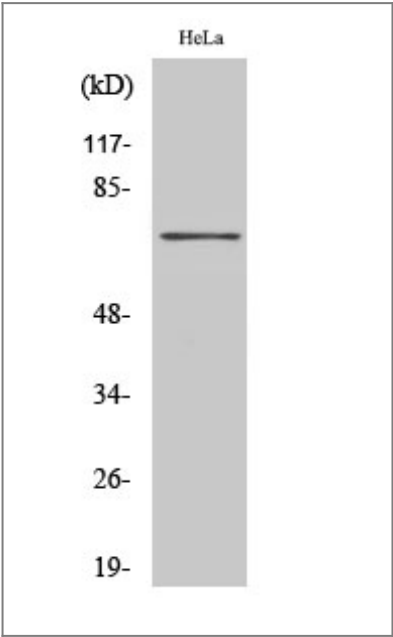
Specificity

HKR1 Polyclonal Antibody detects endogenous levels of HKR1 protein.

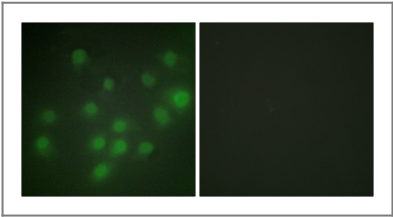
| Target Information

Gene name	HKR1		
Protein Name	Krueppel-related zinc finger protein 1		
	Organism	Gene ID	UniProt ID
	Human	284459 ;	P10072 ;
Cellular Localization	Nucleus .		
Tissue specificity	Brain, Eye, Ovary,		
Function	Function: May be involved in transcriptional regulation., similarity: Belongs to the krueppel C2H2-type zinc-finger protein family., similarity: Contains 1 KRAB domain., similarity: Contains 13 C2H2-type zinc fingers.,		

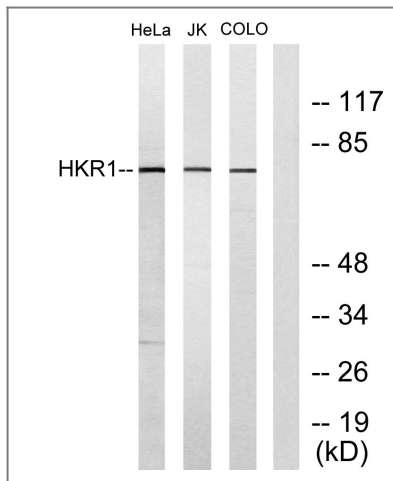
| Validation Data



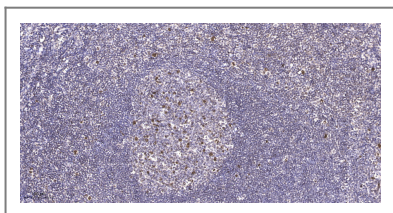
Western Blot analysis of various cells using HKR1 Polyclonal Antibody cells nucleus extracted by Minute TM Cytoplasmic and Nuclear Fractionation kit (SC-003, Invent biotech, MN, USA).



Immunofluorescence analysis of HUVEC cells, using HKR1 Antibody. The picture on the right is blocked with the synthesized peptide.



Western blot analysis of lysates from HeLa, Jurkat, and COLO205 cells, using HKR1 Antibody. The lane on the right is blocked with the synthesized peptide.



Immunohistochemical analysis of paraffin-embedded human tonsil. 1, Antibody was diluted at 1:200(4° overnight). 2, Tris-EDTA,pH9.0 was used for antigen retrieval. 3,Secondary antibody was diluted at 1:200(room temperature, 45min).

Contact information

Orders: order@immunoway.com
 Support: tech@immunoway.com
 Telephone: 877-594-3616 (Toll Free), 408-747-0185
 Website: <http://www.immunoway.com>
 Address: 2200 Ringwood Ave San Jose, CA 95131 USA



Please scan the QR code to access additional product information:
HKR1 Rabbit pAb

For Research Use Only. Not for Use in Diagnostic Procedures.

[Antibody](#) | [ELISA Kits](#) | [Protein](#) | [Reagents](#)