

Histone deacetylase 9 Rabbit pAb

CatalogNo: YT2149

Key Features

Host Species

- Rabbit

Reactivity

- Human, Mouse

Applications

- WB, IHC, IF, ELISA

MW

- 110kD (Observed)

Isotype

- IgG

Recommended Dilution Ratios

WB 1:500-1:2000

IHC 1:100-1:300

IF 1:200-1:1000

ELISA 1:10000

Not yet tested in other applications.

Storage

Storage*

-15°C to -25°C/1 year (Do not lower than -25°C)

Formulation

Liquid in PBS containing 50% glycerol, 0.5% BSA and 0.02% sodium azide.

Basic Information

Clonality

Polyclonal

Immunogen Information

Immunogen

The antiserum was produced against synthesized peptide derived from human HDAC9. AA range: 1017-1066

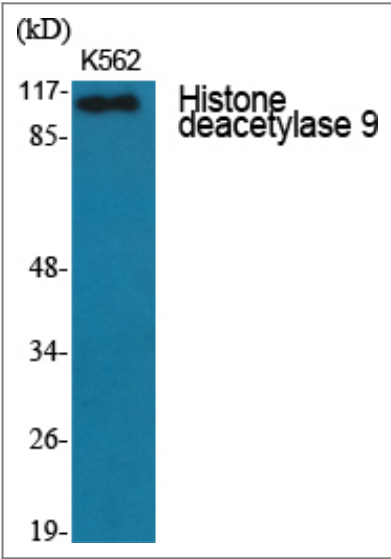
Specificity

Histone deacetylase 9 Polyclonal Antibody detects endogenous levels of Histone deacetylase 9 protein.

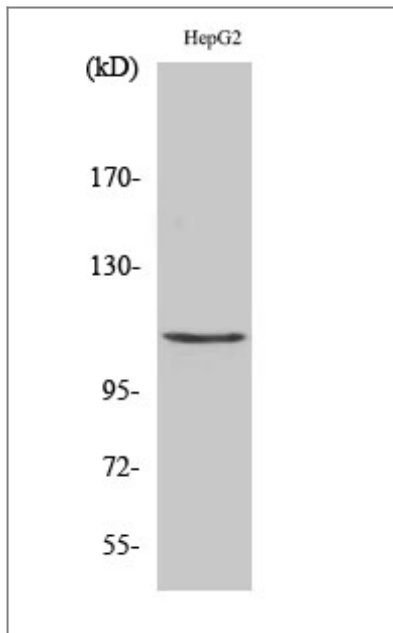
Target Information

Gene name	HDAC9		
Protein Name	Histone deacetylase 9		
	Organism	Gene ID	UniProt ID
	Human	9734 ;	Q9UKV0-5,6,7 ;
Cellular Localization	Nucleus .		
Tissue specificity	Broadly expressed, with highest levels in brain, heart, muscle and testis. Isoform 3 is present in human bladder carcinoma cells (at protein level).		

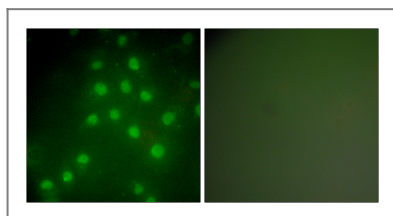
Validation Data



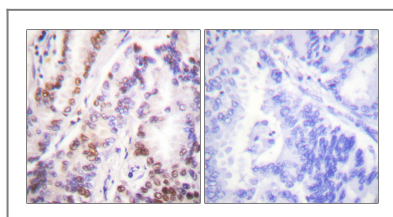
Western Blot analysis of various cells using Histone deacetylase 9 Polyclonal Antibody diluted at 1:1000



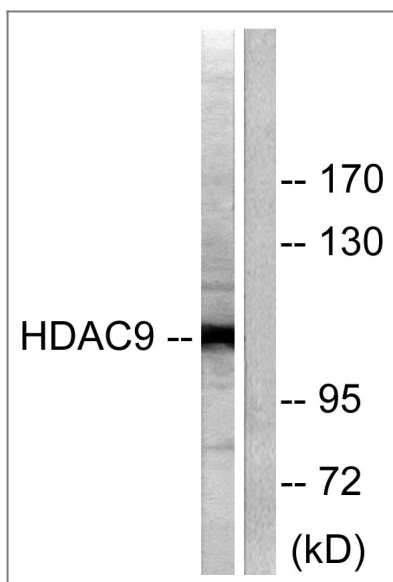
Western Blot analysis of HepG2 cells using Histone deacetylase 9 Polyclonal Antibody diluted at 1:1000



Immunofluorescence analysis of HepG2 cells, using HDAC9 Antibody. The picture on the right is blocked with the synthesized peptide.



Immunohistochemistry analysis of paraffin-embedded human lung carcinoma tissue, using HDAC9 Antibody. The picture on the right is blocked with the synthesized peptide.



Western blot analysis of lysates from HepG2 cells, using HDAC9 Antibody. The lane on the right is blocked with the synthesized peptide.

Contact information

Orders: order@immunoway.com
Support: tech@immunoway.com
Telephone: 877-594-3616 (Toll Free), 408-747-0185
Website: <http://www.immunoway.com>
Address: 2200 Ringwood Ave San Jose, CA 95131 USA



Please scan the QR code
to access additional
product information:
**Histone deacetylase
9 Rabbit pAb**

For Research Use Only. Not for Use in Diagnostic Procedures.

[Antibody](#) | [ELISA Kits](#) | [Protein](#) | [Reagents](#)