

Hint1 Rabbit pAb

CatalogNo: YT2136

Key Features

Host Species

- Rabbit

Reactivity

- Human, Mouse, Rat

Applications

- WB, IHC, IF, ELISA

MW

- 28kD (Observed)

Isotype

- IgG

Storage

Storage* -15°C to -25°C/1 year (Do not lower than -25°C)

Formulation Liquid in PBS containing 50% glycerol, 0.5% BSA and 0.02% sodium azide.

Recommended Dilution Ratios

WB 1:500-1:2000

IHC 1:100-1:300

IF 1:200-1:1000

ELISA 1:20000

Not yet tested in other applications.

Basic Information

Clonality Polyclonal

Immunogen Information

Immunogen The antiserum was produced against synthesized peptide derived from human HINT1. AA range: 71-120

Specificity Hint1 Polyclonal Antibody detects endogenous levels of Hint1 protein.

Target Information

Gene name HINT1

Protein Name Histidine triad nucleotide-binding protein 1

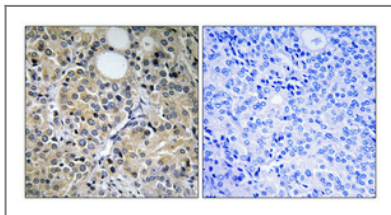
Organism	Gene ID	UniProt ID
Human	3094;	P49773;
Mouse	15254;	P70349;
Rat	690660;	P62959;

Cellular Localization Cytoplasm . Nucleus . Interaction with CDK7 leads to a more nuclear localization. .

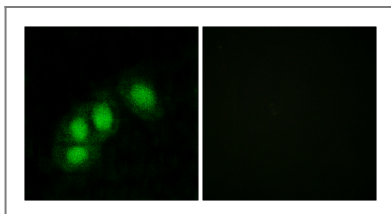
Tissue specificity Widely expressed.

Function Caution:Was originally thought to be a protein kinase C inhibitor and to bind zinc in solution. Both seem to be incorrect.,Domain:The histidine triad, also called HIT motif, forms part of the binding loop for the alpha-phosphate of purine mononucleotide.,Function:Hydrolyzes adenosine 5'-monophosphoramidate substrates such as AMP-morpholidate, AMP-N-alanine methyl ester, AMP-alpha-acetyl lysine methyl ester and AMP-NH2.,similarity:Belongs to the HINT family.,similarity:Contains 1 HIT domain.,subcellular location:Interaction with CDK7 leads to a more nuclear localization.,subunit:Homodimer. Interacts with CDK7.,tissue specificity:Widely expressed.,

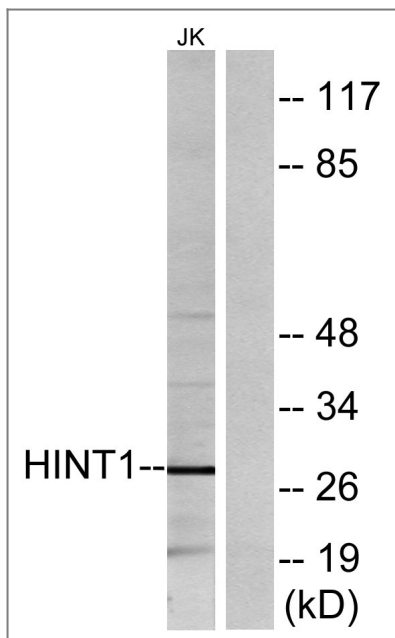
Validation Data



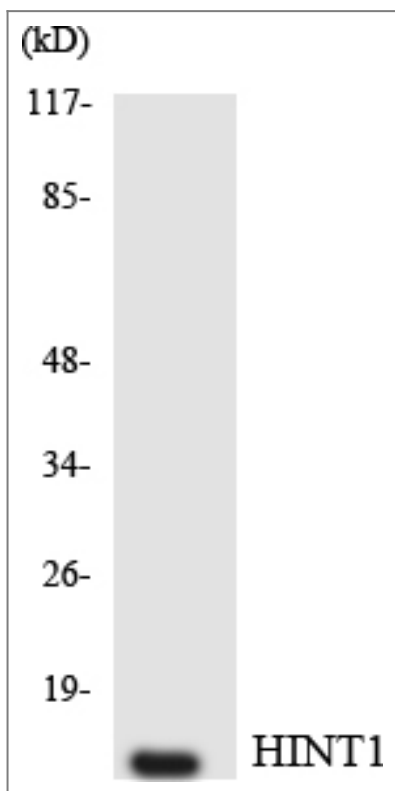
Immunohistochemical analysis of paraffin-embedded Human prostate cancer. Antibody was diluted at 1:100(4° overnight). High-pressure and temperature Tris-EDTA,pH8.0 was used for antigen retrieval. Negative contrl (right) obtained from antibody was pre-absorbed by immunogen peptide.



Immunofluorescence analysis of HeLa cells, using HINT1 Antibody. The picture on the right is blocked with the synthesized peptide.



Western blot analysis of lysates from Jurkat cells, using HINT1 Antibody. The lane on the right is blocked with the synthesized peptide.



Western blot analysis of the lysates from HepG2 cells using HINT1 antibody.

Contact information

Orders: order@immunoway.com
 Support: tech@immunoway.com
 Telephone: 877-594-3616 (Toll Free), 408-747-0185
 Website: <http://www.immunoway.com>
 Address: 2200 Ringwood Ave San Jose, CA 95131 USA



Please scan the QR code to access additional product information:
Hint1 Rabbit pAb

