

## Hel-N1 Rabbit pAb

CatalogNo: YT2124

### Key Features

#### Host Species

- Rabbit

#### Reactivity

- Human, Mouse, Rat

#### Applications

- WB, ELISA

#### MW

- 38kD (Observed)

#### Isotype

- IgG

### Recommended Dilution Ratios

**WB 1:500-1:2000**

**ELISA 1:20000**

**Not yet tested in other applications.**

### Storage

**Storage\*** -15°C to -25°C/1 year (Do not lower than -25°C)

**Formulation** Liquid in PBS containing 50% glycerol, 0.5% BSA and 0.02% sodium azide.

### Basic Information

**Clonality** Polyclonal

### Immunogen Information

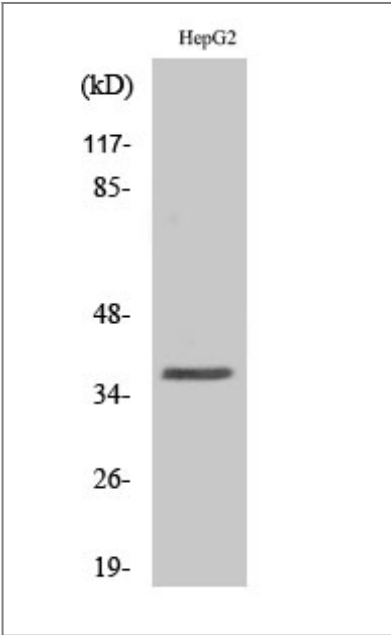
**Immunogen** The antiserum was produced against synthesized peptide derived from human ELAVL2. AA range: 11-60

**Specificity** Hel-N1 Polyclonal Antibody detects endogenous levels of Hel-N1 protein.

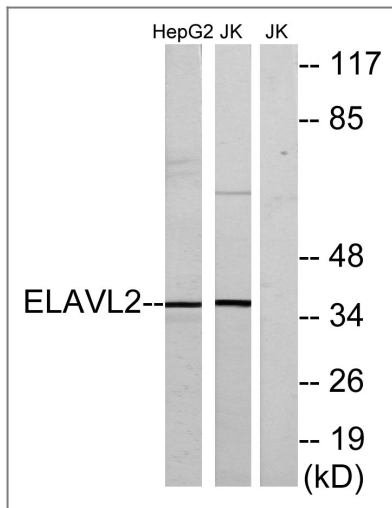
### Target Information

Gene name	ELAVL2		
Protein Name	ELAV-like protein 2		
	Organism	Gene ID	UniProt ID
	Human	<a href="#">1993</a> ;	<a href="#">Q12926</a> ;
	Mouse	<a href="#">15569</a> ;	<a href="#">Q60899</a> ;
	Rat		<a href="#">Q8CH84</a> ;
Cellular Localization	nucleoplasm,		
Tissue specificity	Brain; neural-specific.		
Function	Function: Binds RNA. Seems to recognize a GAAA motif. Can bind to its own 3'-UTR, the FOS 3'-UTR and the ID 3'-UTR., similarity: Belongs to the RRM elav family., similarity: Contains 3 RRM (RNA recognition motif) domains., tissue specificity: Brain; neural-specific.,		

| Validation Data



Western Blot analysis of various cells using Hel-N1 Polyclonal Antibody



Western blot analysis of lysates from HepG2 and Jurkat cells, using ELAVL2 Antibody. The lane on the right is blocked with the synthesized peptide.

## Contact information

Orders: [order@immunoway.com](mailto:order@immunoway.com)  
 Support: [tech@immunoway.com](mailto:tech@immunoway.com)  
 Telephone: 877-594-3616 (Toll Free), 408-747-0185  
 Website: <http://www.immunoway.com>  
 Address: 2200 Ringwood Ave San Jose, CA 95131 USA



Please scan the QR code to access additional product information:  
**Hel-N1 Rabbit pAb**

For Research Use Only. Not for Use in Diagnostic Procedures.

[Antibody](#) | [ELISA Kits](#) | [Protein](#) | [Reagents](#)