

Gy 5 Rabbit pAb

CatalogNo: YT2097

| Key Features

Host Species

- Rabbit

Reactivity

- Human, Mouse, Rat

Applications

- IF, ELISA

MW

- 7kD (Calculated)

Isotype

- IgG

| Recommended Dilution Ratios

IF 1:200-1:1000

ELISA 1:20000

Not yet tested in other applications

| Storage

Storage*

-15°C to -25°C/1 year (Do not lower than -25°C)

Formulation

Liquid in PBS containing 50% glycerol, 0.5% BSA and 0.02% sodium azide.

| Basic Information

Clonality

Polyclonal

| Immunogen Information

Immunogen

The antiserum was produced against synthesized peptide derived from human GNG5. AA range:10-59

Specificity

Gy 5 Polyclonal Antibody detects endogenous levels of Gy 5 protein.

| Target Information

Gene name GNG5

Protein Name Guanine nucleotide-binding protein G(I)/G(S)/G(O) subunit gamma-5

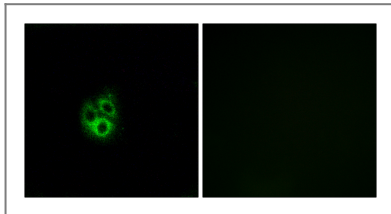
Organism	Gene ID	UniProt ID
Human	2787;	P63218;
Mouse	14707;	Q80SZ7;
Rat	79218;	P63219;

Cellular Localization Cell membrane ; Lipid-anchor ; Cytoplasmic side .

Tissue specificity Brain,Platelet,Umbilical cord blood,

Function Function:Guanine nucleotide-binding proteins (G proteins) are involved as a modulator or transducer in various transmembrane signaling systems. The beta and gamma chains are required for the GTPase activity, for replacement of GDP by GTP, and for G protein-effector interaction.,similarity:Belongs to the G protein gamma family.,subunit:G proteins are composed of 3 units, alpha, beta and gamma.,

| Validation Data



Immunofluorescence analysis of A549 cells, using GNG5 Antibody. The picture on the right is blocked with the synthesized peptide.

| Contact information

Orders: order@immunoway.com
Support: tech@immunoway.com
Telephone: 877-594-3616 (Toll Free), 408-747-0185
Website: <http://www.immunoway.com>
Address: 2200 Ringwood Ave San Jose, CA 95131 USA



Please scan the QR code to access additional product information:
Gy 5 Rabbit pAb