

GSC2 Rabbit pAb

CatalogNo: YT2079

| Key Features

Host Species

- Rabbit

Reactivity

- Human, Mouse

Applications

- WB, ELISA

MW

- 25kD (Observed)

Isotype

- IgG

| Recommended Dilution Ratios

WB 1:500-1:2000

ELISA 1:20000

Not yet tested in other applications.

| Storage

Storage*

-15°C to -25°C/1 year (Do not lower than -25°C)

Formulation

Liquid in PBS containing 50% glycerol, 0.5% BSA and 0.02% sodium azide.

| Basic Information

Clonality

Polyclonal

| Immunogen Information

Immunogen

The antiserum was produced against synthesized peptide derived from human GSC2. AA range:131-180

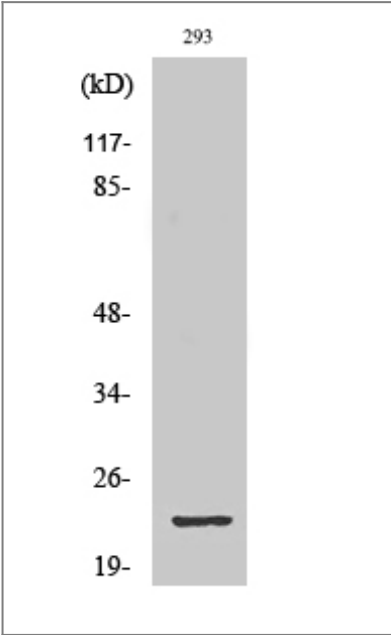
Specificity

GSC2 Polyclonal Antibody detects endogenous levels of GSC2 protein.

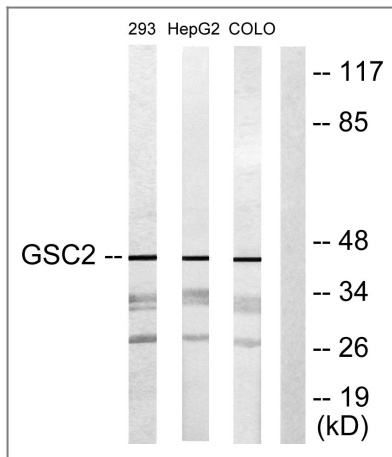
| Target Information

Gene name	GSC2		
Protein Name	Homeobox protein goosecoid-2		
	Organism	Gene ID	UniProt ID
	Human	2928 ;	O15499 ;
	Mouse		P56916 ;
Cellular Localization	Nucleus .		
Tissue specificity	Detected in adult testis and pituitary, and in 9-10 week fetal tissue (thorax). Probably expressed in other tissues at low levels.		
Function	developmental stage:Expressed in early human development as well as in a limited number of adult tissues.,Disease:May play a part in the etiology of the velocardiofacial/DiGeorge syndrome (VCFS/DGS), a developmental disorder characterized by structural and functional palate anomalies, conotruncal cardiac malformations, immunodeficiency, hypocalcemia, and typical facial anomalies. Most cases result from a deletion of chromosome 22q11.2 (the DiGeorge syndrome chromosome region, or DGCR).,Function:May have a role in development. May regulate its own transcription. May bind the bicoid consensus sequence TAATCC.,similarity:Belongs to the paired homeobox family. Bicoid subfamily.,similarity:Contains 1 homeobox DNA-binding domain.,tissue specificity:Detected in adult testis and pituitary, and in 9-10 week fetal tissue (thorax). Probably expressed in other tissues at low levels.,		

| Validation Data



Western Blot analysis of various cells using GSC2 Polyclonal Antibody diluted at 1:1000 cells nucleus extracted by Minute TM Cytoplasmic and Nuclear Fractionation kit (SC-003,Inventbiotech,MN,USA).



Western blot analysis of lysates from 293, HepG2, and COLO205 cells, using GSC2 Antibody. The lane on the right is blocked with the synthesized peptide.

Contact information

Orders: order@immunoway.com
 Support: tech@immunoway.com
 Telephone: 877-594-3616 (Toll Free), 408-747-0185
 Website: <http://www.immunoway.com>
 Address: 2200 Ringwood Ave San Jose, CA 95131 USA



Please scan the QR code to access additional product information:
GSC2 Rabbit pAb

For Research Use Only. Not for Use in Diagnostic Procedures.

[Antibody](#) | [ELISA Kits](#) | [Protein](#) | [Reagents](#)