

GRO γ Rabbit pAb

CatalogNo: YT2075

Orthogonal Validated 

Key Features

Host Species

- Rabbit

Reactivity

- Human,Rat,Mouse,

Applications

- IHC,IF,ELISA

MW

- 11kD (Calculated)

Isotype

- IgG

Recommended Dilution Ratios

IHC 1:100-1:300**ELISA 1:10000****IF 1:50-200**

Storage

Storage*

-15°C to -25°C/1 year(Do not lower than -25°C)

Formulation

Liquid in PBS containing 50% glycerol, 0.5% BSA and 0.02% sodium azide.

Basic Information

Clonality

Polyclonal

Immunogen Information

Immunogen

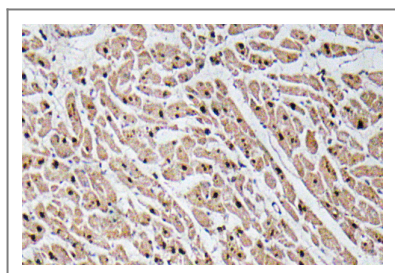
The antiserum was produced against synthesized peptide derived from human GROgamma. AA range:58-107

SpecificityGRO γ Polyclonal Antibody detects endogenous levels of GRO γ protein.

Target Information

Gene name	CXCL3		
Protein Name	C-X-C motif chemokine 3		
	Organism	Gene ID	UniProt ID
	Human	2921 ;	P19876 ;
	Mouse		Q6W5C0 ;
Cellular Localization	Secreted.		
Tissue specificity	Histiocytic lymphoma,Lung,Peripheral blood monocyte,Placenta,		
Function	Function:Ligand for CXCR2 (By similarity). Has chemotactic activity for neutrophils. May play a role in inflammation and exert its effects on endothelial cells in an autocrine fashion. In vitro, the processed form GRO-gamma(5-73) shows a fivefold higher chemotactic activity for neutrophilic granulocytes.,online information: CXCL3 entry,PTM:N-terminal processed form GRO-gamma(5-73) is produced by proteolytic cleavage after secretion from peripheral blood monocytes.,similarity:Belongs to the intercrine alpha (chemokine CxC) family.,		

Validation Data



Immunohistochemistry analysis of GROα antibody in paraffin-embedded human heart tissue.

Contact information

Orders: order@immunoway.com
 Support: tech@immunoway.com
 Telephone: 877-594-3616 (Toll Free), 408-747-0185
 Website: <http://www.immunoway.com>
 Address: 2200 Ringwood Ave San Jose, CA 95131 USA



Please scan the QR code
 to access additional
 product information:
GROγ Rabbit pAb