

GRO α Rabbit pAb

CatalogNo: YT2074

Orthogonal Validated 

Key Features

Host Species

- Rabbit

Reactivity

- Human, Mouse, Rat

Applications

- IHC, IF, ELISA

MW

- 11kD (Calculated)

Isotype

- IgG

Recommended Dilution Ratios

IHC 1:100-1:300

ELISA 1:10000

IF 1:50-200

Storage

Storage*

-15°C to -25°C/1 year (Do not lower than -25°C)

Formulation

Liquid in PBS containing 50% glycerol, 0.5% BSA and 0.02% sodium azide.

Basic Information

Clonality

Polyclonal

Immunogen Information

Immunogen

The antiserum was produced against synthesized peptide derived from human GRO α . AA range: 39-88

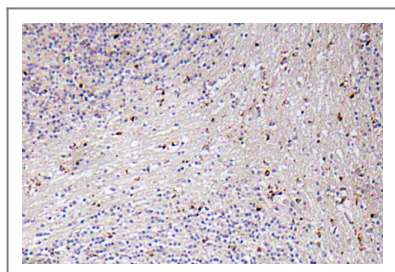
Specificity

GRO α Polyclonal Antibody detects endogenous levels of GRO α protein.

Target Information

Gene name	CXCL1		
Protein Name	Growth-regulated alpha protein		
	Organism	Gene ID	UniProt ID
	Human	2919;	P09341;
	Mouse	14825;	P12850;
	Rat	81503;	P14095;
Cellular Localization	Secreted.		
Tissue specificity	Blood,Ovary,Peripheral blood monocyte,Placenta,Skin,		
Function	Function:Has chemotactic activity for neutrophils. May play a role in inflammation and exerts its effects on endothelial cells in an autocrine fashion. In vitro, the processed forms GRO-alpha(4-73), GRO-alpha(5-73) and GRO-alpha(6-73) show a 30-fold higher chemotactic activity.,online information: CXCL1 entry,PTM:N-terminal processed forms GRO-alpha(4-73), GRO-alpha(5-73) and GRO-alpha(6-73) are produced by proteolytic cleavage after secretion from peripheral blood monocytes.,similarity:Belongs to the intercrine alpha (chemokine CxC) family.,		

Validation Data



Immunohistochemistry analysis of GRO α antibody in paraffin-embedded human brain tissue.

Contact information

Orders: order@immunoway.com
 Support: tech@immunoway.com
 Telephone: 877-594-3616 (Toll Free), 408-747-0185
 Website: <http://www.immunoway.com>
 Address: 2200 Ringwood Ave San Jose, CA 95131 USA



Please scan the QR code to access additional product information:
GRO α Rabbit pAb