

GRK 7 Rabbit pAb

CatalogNo: YT2072

Key Features

Host Species

- Rabbit

Reactivity

- Human

Applications

- WB,IF,ELISA

MW

- 62kD (Observed)

Isotype

- IgG

Storage

Storage* -15°C to -25°C/1 year(Do not lower than -25°C)

Formulation Liquid in PBS containing 50% glycerol, 0.5% BSA and 0.02% sodium azide.

Recommended Dilution Ratios

WB 1:500-1:2000

IF 1:200-1:1000

ELISA 1:20000

Not yet tested in other applications.

Basic Information

Clonality Polyclonal

Immunogen Information

Immunogen The antiserum was produced against synthesized peptide derived from human GRK7. AA range:371-420

Specificity GRK 7 Polyclonal Antibody detects endogenous levels of GRK 7 protein.

Target Information

Gene name GRK7

Protein Name G protein-coupled receptor kinase 7

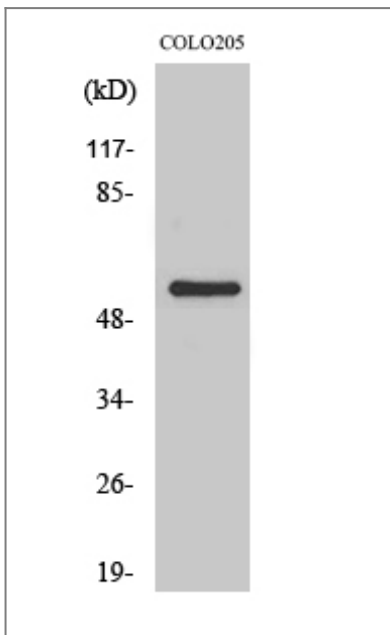
Organism	Gene ID	UniProt ID
Human	131890 ;	Q8WTQ7 ;

Cellular Localization Membrane ; Lipid-anchor .

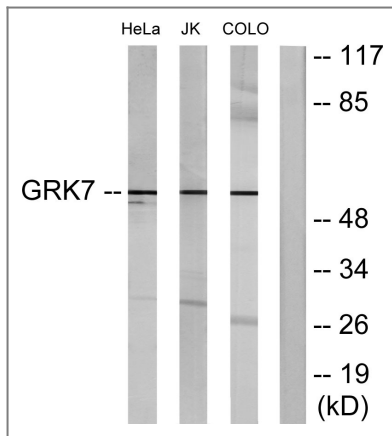
Tissue specificity Retinal cones, outer and inner segments.

Function Catalytic activity:ATP + [G-protein-coupled receptor] = ADP + [G-protein-coupled receptor] phosphate.,Function:Phosphorylates cone opsins thereby initiating their deactivation.,similarity:Belongs to the protein kinase superfamily. AGC Ser/Thr protein kinase family. GPRK subfamily.,similarity:Contains 1 AGC-kinase C-terminal domain.,similarity:Contains 1 protein kinase domain.,similarity:Contains 1 RGS domain.,tissue specificity:Retina. Cones and rod.,

Validation Data



Western Blot analysis of various cells using GRK 7 Polyclonal Antibody



Western blot analysis of lysates from COLO205, Jurkat, and HeLa cells, using GRK7 Antibody. The lane on the right is blocked with the synthesized peptide.

Contact information

Orders: order@immunoway.com
Support: tech@immunoway.com
Telephone: 877-594-3616 (Toll Free), 408-747-0185
Website: <http://www.immunoway.com>
Address: 2200 Ringwood Ave San Jose, CA 95131 USA



Please scan the QR code to access additional product information:
GRK 7 Rabbit pAb

For Research Use Only. Not for Use in Diagnostic Procedures.

[Antibody](#) | [ELISA Kits](#) | [Protein](#) | [Reagents](#)