

GRK 6 Rabbit pAb

CatalogNo: YT2071

Key Features

Host Species

- Rabbit

Reactivity

- Human, Mouse, Rat

Applications

- WB, IF, ELISA

MW

- 65kD (Observed)

Isotype

- IgG

Recommended Dilution Ratios

WB 1:500-1:2000

IF 1:200-1:1000

ELISA 1:10000

Not yet tested in other applications.

Storage

Storage*

-15°C to -25°C/1 year (Do not lower than -25°C)

Formulation

Liquid in PBS containing 50% glycerol, 0.5% BSA and 0.02% sodium azide.

Basic Information

Clonality

Polyclonal

Immunogen Information

Immunogen

The antiserum was produced against synthesized peptide derived from human GRK6. AA range:10-59

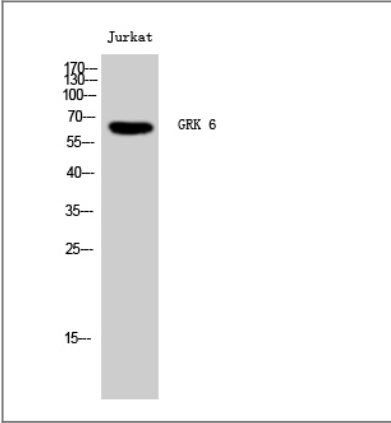
Specificity

GRK 6 Polyclonal Antibody detects endogenous levels of GRK 6 protein.

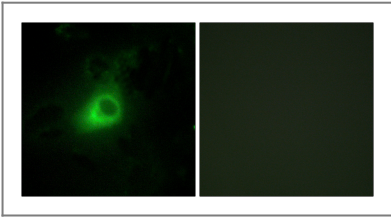
Target Information

Gene name	GRK6		
Protein Name	G protein-coupled receptor kinase 6		
	Organism	Gene ID	UniProt ID
	Human	2870 ;	P43250 ;
	Mouse	26385 ;	O70293 ;
	Rat		P97711 ;
Cellular Localization	Membrane; Lipid-anchor.		
Tissue specificity	Widely expressed.		
Function	Catalytic activity:ATP + [G-protein-coupled receptor] = ADP + [G-protein-coupled receptor] phosphate.,Function:Specifically phosphorylates the activated forms of G protein-coupled receptors.,PTM:It is uncertain whether palmitoylation is on Cys-561 and/or Cys-562 and/or Cys-565.,similarity:Belongs to the protein kinase superfamily.,similarity:Belongs to the protein kinase superfamily. AGC Ser/Thr protein kinase family. GPRK subfamily.,similarity:Contains 1 AGC-kinase C-terminal domain.,similarity:Contains 1 protein kinase domain.,similarity:Contains 1 RGS domain.,tissue specificity:Widely expressed.,		

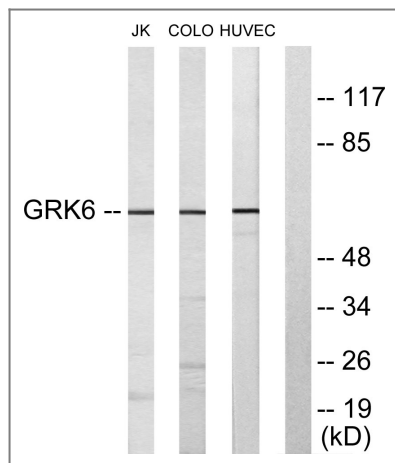
| Validation Data



Western Blot analysis of Jurkat cells using GRK 6 Polyclonal Antibody



Immunofluorescence analysis of HeLa cells, using GRK6 Antibody. The picture on the right is blocked with the synthesized peptide.



Western blot analysis of lysates from Jurkat, COLO205, and HUVEC cells, using GRK6 Antibody. The lane on the right is blocked with the synthesized peptide.

Contact information

Orders: order@immunoway.com
 Support: tech@immunoway.com
 Telephone: 877-594-3616 (Toll Free), 408-747-0185
 Website: <http://www.immunoway.com>
 Address: 2200 Ringwood Ave San Jose, CA 95131 USA



Please scan the QR code to access additional product information:
GRK 6 Rabbit pAb

For Research Use Only. Not for Use in Diagnostic Procedures.

[Antibody](#) | [ELISA Kits](#) | [Protein](#) | [Reagents](#)