

GRK 5 Rabbit pAb

CatalogNo: YT2070

Key Features

Host Species

- Rabbit

Reactivity

- Human, Mouse, Rat

Applications

- WB, IHC, IF, ELISA

MW

- 68kD (Observed)

Isotype

- IgG

Recommended Dilution Ratios

WB 1:500-1:2000

IHC 1:100-1:300

ELISA 1:10000

IF 1:50-200

Storage

Storage*

-15°C to -25°C/1 year (Do not lower than -25°C)

Formulation

Liquid in PBS containing 50% glycerol, 0.5% BSA and 0.02% sodium azide.

Basic Information

Clonality

Polyclonal

Immunogen Information

Immunogen

The antiserum was produced against synthesized peptide derived from human GRK5. AA range: 351-400

Specificity

GRK 5 Polyclonal Antibody detects endogenous levels of GRK 5 protein.

Target Information

Gene name GRK5

Protein Name G protein-coupled receptor kinase 5

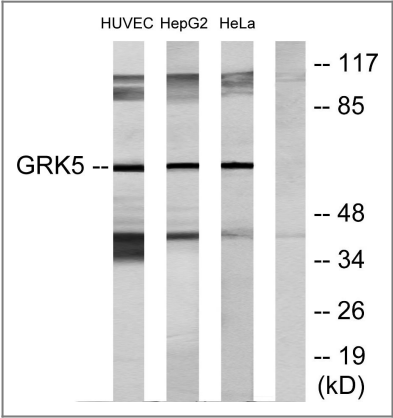
Organism	Gene ID	UniProt ID
Human	2869 ;	P34947 ;
Mouse	14773 ;	Q8VEB1 ;
Rat	59075 ;	Q62833 ;

Cellular Localization Cytoplasm. Nucleus. Cell membrane; Peripheral membrane protein. Predominantly localized at the plasma membrane; targeted to the cell surface through the interaction with phospholipids. Nucleus localization is regulated in a GPCR and Ca(2+)/calmodulin-dependent fashion.

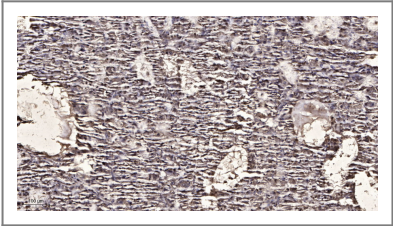
Tissue specificity Highest levels in heart, placenta, lung > skeletal muscle > brain, liver, pancreas > kidney.

Function Catalytic activity:ATP + [G-protein-coupled receptor] = ADP + [G-protein-coupled receptor] phosphate.,Function:Specifically phosphorylates the activated forms of G protein-coupled receptors.,similarity:Belongs to the protein kinase superfamily. AGC Ser/Thr protein kinase family. GPRK subfamily.,similarity:Contains 1 AGC-kinase C-terminal domain.,similarity:Contains 1 protein kinase domain.,similarity:Contains 1 RGS domain.,tissue specificity:Highest levels in heart, placenta, lung > skeletal muscle > brain, liver, pancreas > kidney.,

Validation Data



Western blot analysis of lysates from HeLa, HepG2, and HUVEC cells, using GRK5 Antibody. The lane on the right is blocked with the synthesized peptide.



Immunohistochemical analysis of paraffin-embedded human liver cancer. 1, Antibody was diluted at 1:200(4° overnight). 2, Tris-EDTA,pH9.0 was used for antigen retrieval. 3,Secondary antibody was diluted at 1:200(room temperature, 45min).

Contact information

Orders: order@immunoway.com
Support: tech@immunoway.com
Telephone: 877-594-3616 (Toll Free), 408-747-0185
Website: http://www.immunoway.com
Address: 2200 Ringwood Ave San Jose, CA 95131 USA



Please scan the QR code
to access additional
product information:
GRK 5 Rabbit pAb

For Research Use Only. Not for Use in Diagnostic Procedures.

[Antibody](#) | [ELISA Kits](#) | [Protein](#) | [Reagents](#)