

## GRIN1 Rabbit pAb

CatalogNo: YT2059

### Key Features

#### Host Species

- Rabbit

#### Reactivity

- Human, Mouse

#### Applications

- WB, ELISA

#### MW

- 102kD (Observed)

#### Isotype

- IgG

### Recommended Dilution Ratios

**WB 1:500-1:2000**

**ELISA 1:40000**

**Not yet tested in other applications.**

### Storage

**Storage\*** -15°C to -25°C/1 year (Do not lower than -25°C)

**Formulation** Liquid in PBS containing 50% glycerol, 0.5% BSA and 0.02% sodium azide.

### Basic Information

**Clonality** Polyclonal

### Immunogen Information

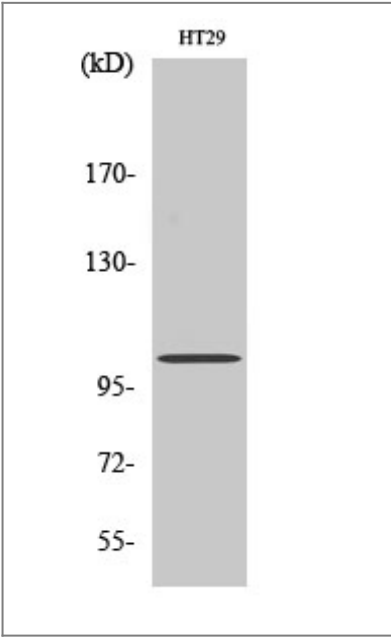
**Immunogen** The antiserum was produced against synthesized peptide derived from human GPRIN1. AA range: 231-280

**Specificity** GRIN1 Polyclonal Antibody detects endogenous levels of GRIN1 protein.

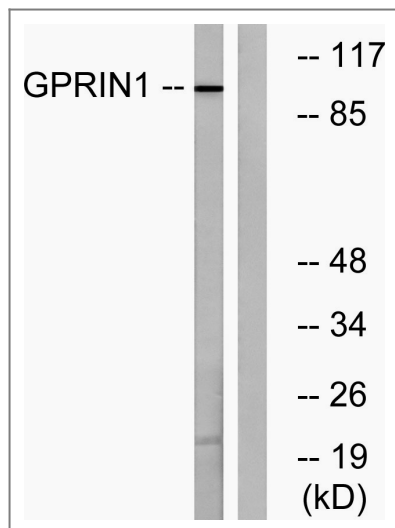
### Target Information

Gene name	GPRIN1		
Protein Name	G protein-regulated inducer of neurite outgrowth 1		
	Organism	Gene ID	UniProt ID
	Human	<a href="#">114787</a> ;	<a href="#">Q7Z2K8</a> ;
	Mouse		<a href="#">Q3UNH4</a> ;
Cellular Localization	Cell membrane ; Lipid-anchor . Cell projection, growth cone . Highly enriched in growth cone. .		
Tissue specificity	Widely expressed in the central nervous system, with highest levels in spinal cord.		
Function	Function:May be involved in neurite outgrowth.,PTM:Palmitoylation on Cys-999 and/or Cys-1000 is required for membrane targeting.,subcellular location:Highly enriched in growth cone.,subunit:Interacts with activated forms of GNAI1, GNAO1 and GNAZ.,tissue specificity:Widely expressed in the central nervous system, with highest levels in spinal cord.,		

| Validation Data



Western Blot analysis of HT29 cells using GRIN1 Polyclonal Antibody diluted at 1:500



Western blot analysis of lysates from HT-29 cells, using GPRIN1 Antibody. The lane on the right is blocked with the synthesized peptide.

## Contact information

Orders: [order@immunoway.com](mailto:order@immunoway.com)  
Support: [tech@immunoway.com](mailto:tech@immunoway.com)  
Telephone: 877-594-3616 (Toll Free), 408-747-0185  
Website: <http://www.immunoway.com>  
Address: 2200 Ringwood Ave San Jose, CA 95131 USA



Please scan the QR code to access additional product information:  
**GRIN1 Rabbit pAb**

For Research Use Only. Not for Use in Diagnostic Procedures.

[Antibody](#) | [ELISA Kits](#) | [Protein](#) | [Reagents](#)