

GPSN2 Rabbit pAb

CatalogNo: YT2042

| Key Features

Host Species

- Rabbit

Reactivity

- Human, Mouse, Rat

Applications

- WB, IHC, IF, ELISA

MW

- 36kD (Calculated)

Isotype

- IgG

| Recommended Dilution Ratios

WB 1:500-2000

IHC 1:100-1:300

ELISA 1:40000

IF 1:50-200

| Storage

Storage*

-15°C to -25°C/1 year (Do not lower than -25°C)

Formulation

Liquid in PBS containing 50% glycerol, 0.5% BSA and 0.02% sodium azide.

| Basic Information

Clonality

Polyclonal

| Immunogen Information

Immunogen

The antiserum was produced against synthesized peptide derived from human GPSN2. AA range: 259-308

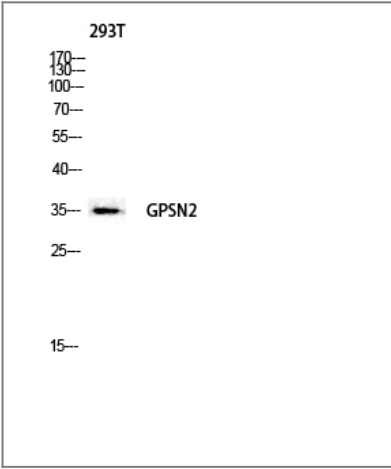
Specificity

GPSN2 Polyclonal Antibody detects endogenous levels of GPSN2 protein.

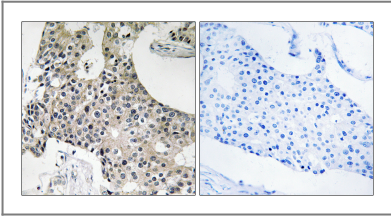
| Target Information

Gene name	TECR		
Protein Name	Trans-2,3-enoyl-CoA reductase		
	Organism	Gene ID	UniProt ID
	Human	9524;	Q9NZ01;
	Mouse	106529;	Q9CY27;
	Rat	191576;	Q64232;
Cellular Localization	Endoplasmic reticulum membrane ; Multi-pass membrane protein .		
Tissue specificity	Expressed in most tissues tested. Highly expressed in skeletal muscle.		
Function	steroid biosynthetic process, steroid metabolic process, lipid biosynthetic process, oxidation reduction,		

Validation Data



Western blot analysis of 293T lysis using GPSN2 antibody. Antibody was diluted at 1:2000



Immunohistochemistry analysis of paraffin-embedded human breast carcinoma tissue, using GPSN2 Antibody. The picture on the right is blocked with the synthesized peptide.

Contact information

Orders: order@immunoway.com
Support: tech@immunoway.com
Telephone: 877-594-3616 (Toll Free), 408-747-0185
Website: http://www.immunoway.com
Address: 2200 Ringwood Ave San Jose, CA 95131 USA



Please scan the QR code
to access additional
product information:
GPSN2 Rabbit pAb

For Research Use Only. Not for Use in Diagnostic Procedures.

[Antibody](#) | [ELISA Kits](#) | [Protein](#) | [Reagents](#)