

GPR83 Rabbit pAb

CatalogNo: YT2032

| Key Features

Host Species

- Rabbit

Reactivity

- Human,Rat,Mouse,

Applications

- WB,ELISA

MW

- 48kD (Observed)

Isotype

- IgG

| Recommended Dilution Ratios

WB 1:500-1:2000

ELISA 1:5000

Not yet tested in other applications.

| Storage

Storage*

-15°C to -25°C/1 year(Do not lower than -25°C)

Formulation

Liquid in PBS containing 50% glycerol, 0.5% BSA and 0.02% sodium azide.

| Basic Information

Clonality

Polyclonal

| Immunogen Information

Immunogen

The antiserum was produced against synthesized peptide derived from human GPR83. AA range:361-410

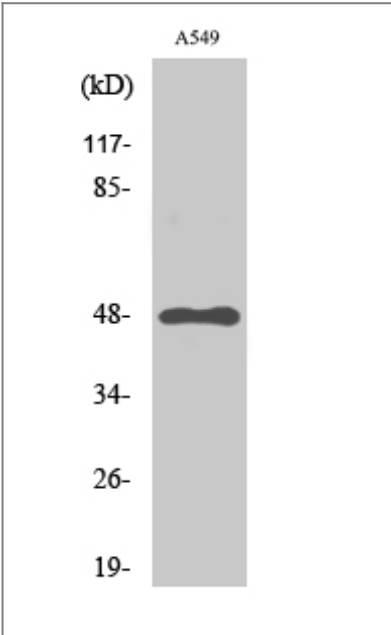
Specificity

GPR83 Polyclonal Antibody detects endogenous levels of GPR83 protein.

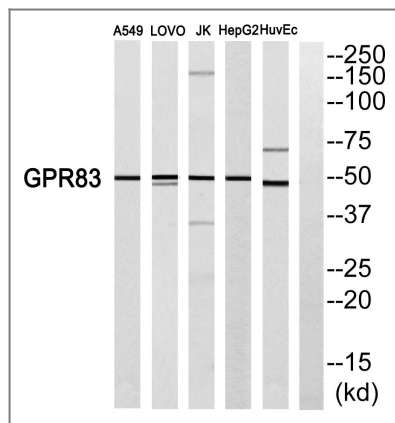
| Target Information

Gene name	GPR83		
Protein Name	Probable G-protein coupled receptor 83		
	Organism	Gene ID	UniProt ID
	Human	10888 ;	Q9NYM4 ;
	Mouse		P30731 ;
Cellular Localization	Cell membrane ; Multi-pass membrane protein . Colocalizes with GPR171 in the paraventricular nucleus. Colocalizes with the ghrelin receptor GHSR1A in the hypothalamus. .		
Tissue specificity	Highly expressed in the brain and spinal cord, and found in lower concentrations in the thymus and other tissues.		
Function	Function:Orphan receptor. Could be a neuropeptide y receptor.,similarity:Belongs to the G-protein coupled receptor 1 family.,tissue specificity:Brain specific.,		

| Validation Data



Western Blot analysis of various cells using GPR83 Polyclonal Antibody



Western blot analysis of GPR83 Antibody. The lane on the right is blocked with the GPR83 peptide.

Contact information

Orders: order@immunoway.com
 Support: tech@immunoway.com
 Telephone: 877-594-3616 (Toll Free), 408-747-0185
 Website: <http://www.immunoway.com>
 Address: 2200 Ringwood Ave San Jose, CA 95131 USA



Please scan the QR code
 to access additional
 product information:
GPR83 Rabbit pAb

For Research Use Only. Not for Use in Diagnostic Procedures.

[Antibody](#) | [ELISA Kits](#) | [Protein](#) | [Reagents](#)