

GPR68 Rabbit pAb

CatalogNo: YT2029

Key Features

Host Species

- Rabbit

Reactivity

- Human, Mouse

Applications

- WB, IF, ELISA

MW

- 41kD (Observed)

Isotype

- IgG

Recommended Dilution Ratios

WB 1:500-1:2000

IF 1:200-1:1000

ELISA 1:5000

Not yet tested in other applications.

Storage

Storage*

-15°C to -25°C/1 year (Do not lower than -25°C)

Formulation

Liquid in PBS containing 50% glycerol, 0.5% BSA and 0.02% sodium azide.

Basic Information

Clonality

Polyclonal

Immunogen Information

Immunogen

The antiserum was produced against a synthesized peptide derived from human GRP68. AA range: 281-330

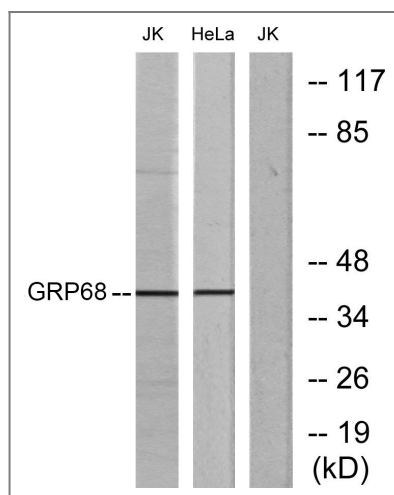
Specificity

GPR68 Polyclonal Antibody detects endogenous levels of GPR68 protein.

Target Information

| | | | |
|------------------------------|--|--------------------------|--------------------------|
| Gene name | GPR68 | | |
| Protein Name | Ovarian cancer G-protein coupled receptor 1 | | |
| | Organism | Gene ID | UniProt ID |
| | Human | 8111 ; | Q15743 ; |
| | Mouse | 238377 ; | Q8BFQ3 ; |
| Cellular Localization | Cell membrane; Multi-pass membrane protein. | | |
| Tissue specificity | Found at low level in a wide range of tissues, but significantly expressed in lung, kidney, bone and nervous system. | | |
| Function | similarity:Belongs to the G-protein coupled receptor 1 family., | | |

Validation Data



Western blot analysis of lysates from Jurkat and HeLa cells, using SPR1 Antibody. The lane on the right is blocked with the synthesized peptide.

Contact information

Orders: order@immunoway.com
 Support: tech@immunoway.com
 Telephone: 877-594-3616 (Toll Free), 408-747-0185
 Website: <http://www.immunoway.com>
 Address: 2200 Ringwood Ave San Jose, CA 95131 USA



Please scan the QR code to access additional product information:
GPR68 Rabbit pAb