

GPR34 Rabbit pAb

CatalogNo: YT2014

Key Features

Host Species

- Rabbit

Reactivity

- Human, Mouse, Rat, Monkey

Applications

- WB, IF, ELISA

MW

- 44kD (Observed)

Isotype

- IgG

Storage

Storage* -15°C to -25°C/1 year (Do not lower than -25°C)**Formulation** Liquid in PBS containing 50% glycerol, 0.5% BSA and 0.02% sodium azide.

Recommended Dilution Ratios

WB 1:500-1:2000**IF 1:200-1:1000****ELISA 1:10000****Not yet tested in other applications.**

Basic Information

Clonality Polyclonal

Immunogen Information

Immunogen The antiserum was produced against synthesized peptide derived from human GPR34. AA range:181-230**Specificity** GPR34 Polyclonal Antibody detects endogenous levels of GPR34 protein.

Target Information

Gene name GPR34

Protein Name Probable G-protein coupled receptor 34

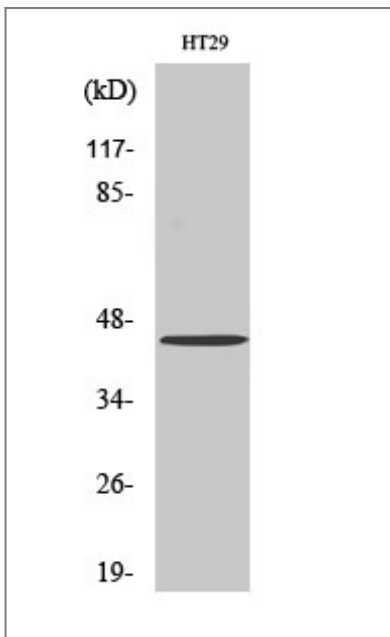
Organism	Gene ID	UniProt ID
Human	2857;	Q9UPC5;
Mouse	23890;	Q9R1K6;

Cellular Localization Cell membrane ; Multi-pass membrane protein .

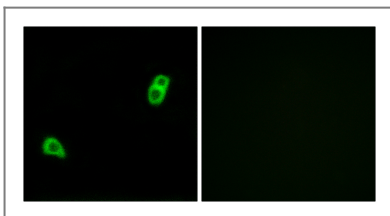
Tissue specificity Broadly expressed.

Function Function:Orphan receptor.,similarity:Belongs to the G-protein coupled receptor 1 family.,tissue specificity:Broadly expressed.,

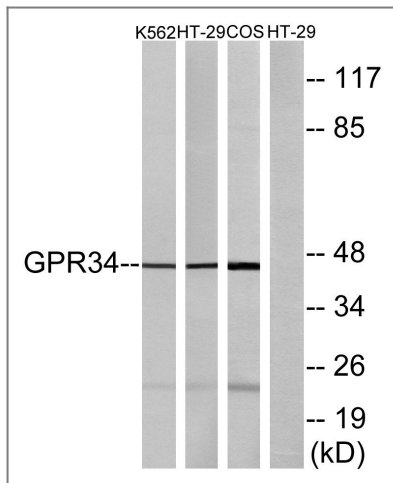
Validation Data



Western Blot analysis of various cells using GPR34 Polyclonal Antibody



Immunofluorescence analysis of LOVO cells, using GPR34 Antibody. The picture on the right is blocked with the synthesized peptide.



Western blot analysis of lysates from HT-29, K562, and COS7 cells, using GPR34 Antibody. The lane on the right is blocked with the synthesized peptide.

Contact information

Orders: order@immunoway.com
 Support: tech@immunoway.com
 Telephone: 877-594-3616 (Toll Free), 408-747-0185
 Website: <http://www.immunoway.com>
 Address: 2200 Ringwood Ave San Jose, CA 95131 USA



Please scan the QR code to access additional product information:
GPR34 Rabbit pAb

For Research Use Only. Not for Use in Diagnostic Procedures.

[Antibody](#) | [ELISA Kits](#) | [Protein](#) | [Reagents](#)