

## GPR32 Rabbit pAb

CatalogNo: YT2013

### Key Features

#### Host Species

- Rabbit

#### Reactivity

- Human

#### Applications

- WB,IF,ELISA

#### MW

- 33kD (Observed)

#### Isotype

- IgG

### Recommended Dilution Ratios

**WB 1:500-1:2000**

**IF 1:200-1:1000**

**ELISA 1:20000**

**Not yet tested in other applications.**

### Storage

#### Storage\*

-15°C to -25°C/1 year(Do not lower than -25°C)

#### Formulation

Liquid in PBS containing 50% glycerol, 0.5% BSA and 0.02% sodium azide.

### Basic Information

#### Clonality

Polyclonal

### Immunogen Information

#### Immunogen

The antiserum was produced against synthesized peptide derived from human GPR32. AA range:151-200

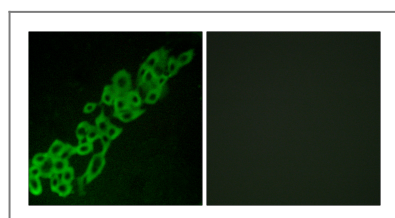
#### Specificity

GPR32 Polyclonal Antibody detects endogenous levels of GPR32 protein.

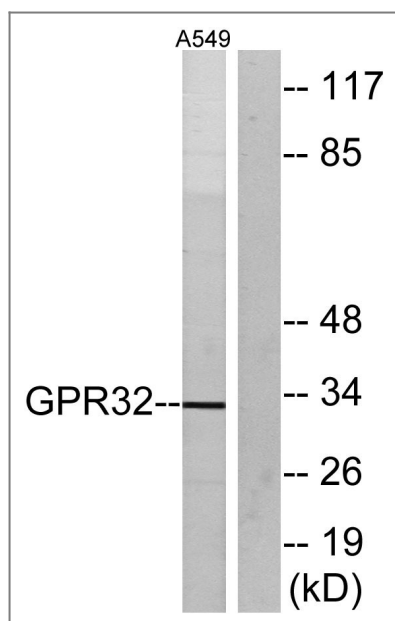
### Target Information

|                              |   |                       |                         |
|------------------------------|---|-----------------------|-------------------------|
| <b>Gene name</b>             | GPR32   |                       |                         |
| <b>Protein Name</b>          | Probable G-protein coupled receptor 32  |                       |                         |
|                              | <b>Organism</b>   | <b>Gene ID</b>        | <b>UniProt ID</b>       |
|                              | Human   | <a href="#">2854;</a> | <a href="#">075388;</a> |
| <b>Cellular Localization</b> | Cell membrane; Multi-pass membrane protein.   |                       |                         |
| <b>Function</b>              | Function:Orphan receptor.,similarity:Belongs to the G-protein coupled receptor 1 family., |                       |                         |

## Validation Data



Immunofluorescence analysis of A549 cells, using GPR32 Antibody. The picture on the right is blocked with the synthesized peptide.



Western blot analysis of lysates from A549 cells, using GPR32 Antibody. The lane on the right is blocked with the synthesized peptide.

## Contact information

Orders: [order@immunoway.com](mailto:order@immunoway.com)  
 Support: [tech@immunoway.com](mailto:tech@immunoway.com)  
 Telephone: 877-594-3616 (Toll Free), 408-747-0185  
 Website: <http://www.immunoway.com>  
 Address: 2200 Ringwood Ave San Jose, CA 95131 USA



Please scan the QR code to access additional product information:  
**GPR32 Rabbit pAb**

