

## GPR31 Rabbit pAb

CatalogNo: YT2012

### | Key Features

#### Host Species

- Rabbit

#### Reactivity

- Human, Mouse

#### Applications

- WB, ELISA

#### MW

- 33kD (Observed)

#### Isotype

- IgG

### | Recommended Dilution Ratios

**WB 1:500-1:2000**

**ELISA 1:5000**

**Not yet tested in other applications.**

### | Storage

#### Storage\*

-15°C to -25°C/1 year (Do not lower than -25°C)

#### Formulation

Liquid in PBS containing 50% glycerol, 0.5% BSA and 0.02% sodium azide.

### | Basic Information

#### Clonality

Polyclonal

### | Immunogen Information

#### Immunogen

The antiserum was produced against synthesized peptide derived from human GPR31. AA range: 181-230

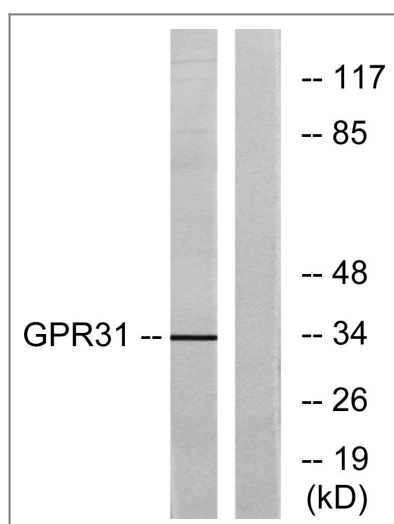
#### Specificity

GPR31 Polyclonal Antibody detects endogenous levels of GPR31 protein.

### | Target Information

<b>Gene name</b>	GPR31		
<b>Protein Name</b>	12-(S)-hydroxy-5,8,10,14-eicosatetraenoic acid receptor		
	<b>Organism</b>	<b>Gene ID</b>	<b>UniProt ID</b>
	Human	<a href="#">2853</a> ;	<a href="#">O00270</a> ;
	Mouse		<a href="#">F8VQN3</a> ;
<b>Cellular Localization</b>	Cell membrane ; Multi-pass membrane protein .		
<b>Tissue specificity</b>	G-protein coupled receptors,Placenta,		
<b>Function</b>	Function:Orphan receptor.,similarity:Belongs to the G-protein coupled receptor 1 family.,		

## Validation Data



Western blot analysis of lysates from COLO cells, using GPR31 Antibody. The lane on the right is blocked with the synthesized peptide.

## Contact information

Orders: [order@immunoway.com](mailto:order@immunoway.com)  
 Support: [tech@immunoway.com](mailto:tech@immunoway.com)  
 Telephone: 877-594-3616 (Toll Free), 408-747-0185  
 Website: <http://www.immunoway.com>  
 Address: 2200 Ringwood Ave San Jose, CA 95131 USA



Please scan the QR code to access additional product information:  
**GPR31 Rabbit pAb**