

GPR25 Rabbit pAb

CatalogNo: YT2010

| Key Features

Host Species

- Rabbit

Reactivity

- Human, Mouse

Applications

- WB, ELISA

MW

- 38kD (Observed)

Isotype

- IgG

| Recommended Dilution Ratios

WB 1:500-1:2000

ELISA 1:5000

Not yet tested in other applications.

| Storage

Storage* -15°C to -25°C/1 year (Do not lower than -25°C)

Formulation Liquid in PBS containing 50% glycerol, 0.5% BSA and 0.02% sodium azide.

| Basic Information

Clonality Polyclonal

| Immunogen Information

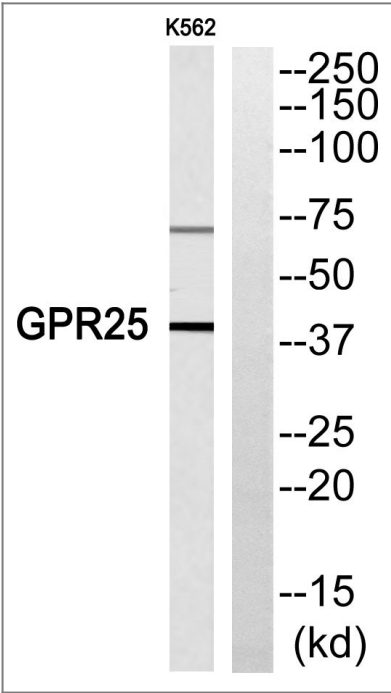
Immunogen The antiserum was produced against synthesized peptide derived from human GPR25. AA range: 193-242

Specificity GPR25 Polyclonal Antibody detects endogenous levels of GPR25 protein.

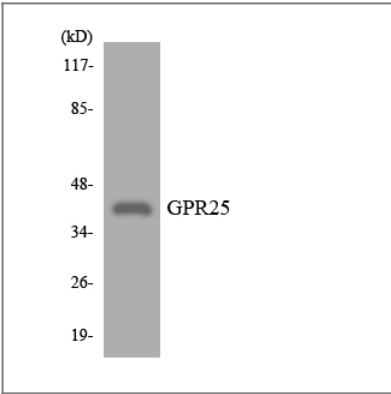
| Target Information

Gene name	GPR25		
Protein Name	Probable G-protein coupled receptor 25		
	Organism	Gene ID	UniProt ID
	Human	2848 ;	O00155 ;
	Mouse		P0C5I1 ;
Cellular Localization	Cell membrane; Multi-pass membrane protein.		
Tissue specificity	Brain,		
Function	Function:Orphan receptor.,similarity:Belongs to the G-protein coupled receptor 1 family.,		

Validation Data



Western blot analysis of GPR25 Antibody. The lane on the right is blocked with the GPR25 peptide.



Western blot analysis of the lysates from K562 cells using GPR25 antibody.

| Contact information

Orders: order@immunoway.com
Support: tech@immunoway.com
Telephone: 877-594-3616 (Toll Free), 408-747-0185
Website: <http://www.immunoway.com>
Address: 2200 Ringwood Ave San Jose, CA 95131 USA



Please scan the QR code
to access additional
product information:
GPR25 Rabbit pAb

For Research Use Only. Not for Use in Diagnostic Procedures.

[Antibody](#) | [ELISA Kits](#) | [Protein](#) | [Reagents](#)