

GPR103 Rabbit pAb

CatalogNo: YT1951

Key Features

Host Species

- Rabbit

Reactivity

- Human, Mouse, Rat

Applications

- WB, IF, ELISA

MW

- 49kD (Observed)

Isotype

- IgG

Recommended Dilution Ratios

WB 1:500-1:2000

IF 1:200-1:1000

ELISA 1:10000

Not yet tested in other applications.

Storage

Storage*

-15°C to -25°C/1 year (Do not lower than -25°C)

Formulation

Liquid in PBS containing 50% glycerol, 0.5% BSA and 0.02% sodium azide.

Basic Information

Clonality

Polyclonal

Immunogen Information

Immunogen

The antiserum was produced against synthesized peptide derived from human GPR103. AA range: 271-320

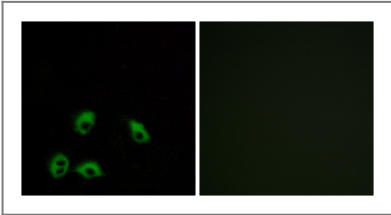
Specificity

GPR103 Polyclonal Antibody detects endogenous levels of GPR103 protein.

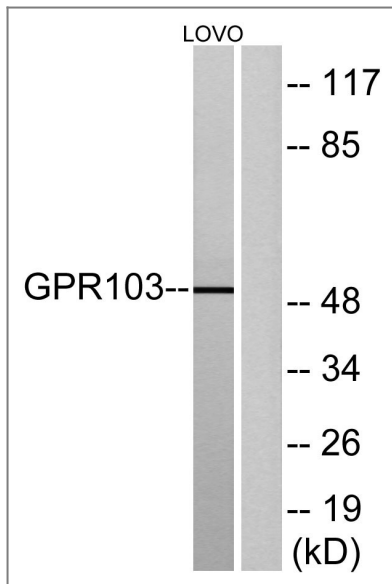
Target Information

Gene name	QRFPR		
Protein Name	Pyroglutamylated RFamide peptide receptor		
	Organism	Gene ID	UniProt ID
	Human	84109 ;	Q96P65 ;
	Mouse	229214 ;	P83861 ;
	Rat	310327 ;	P83858 ;
Cellular Localization	Cell membrane; Multi-pass membrane protein.		
Tissue specificity	Expressed widely in the brain with high levels in the hypothalamus, trigeminal ganglia and vestibular neurons, and moderate levels in the amygdala, cortex, pituitary, hippocampus, thalamus, caudate nucleus and medulla oblongata. In peripheral tissues, expressed at high levels in the retina and at moderate levels in the heart, kidney, testis and thyroid.		
Function	Function:Receptor for the orexigenic neuropeptide QRFPR. The activity of this receptor is mediated by G proteins that modulate adenylate cyclase activity and intracellular calcium levels.,similarity:Belongs to the G-protein coupled receptor 1 family.,tissue specificity:Expressed widely in the brain with high levels in the hypothalamus, trigeminal ganglia and vestibular neurons, and moderate levels in the amygdala, cortex, pituitary, hippocampus, thalamus, caudate nucleus and medulla oblongata. In peripheral tissues, expressed at high levels in the retina and at moderate levels in the heart, kidney, testis and thyroid.,		

| Validation Data



Immunofluorescence analysis of MCF7 cells, using GPR103 Antibody. The picture on the right is blocked with the synthesized peptide.



Western blot analysis of lysates from LOVO cells, using GPR103 Antibody. The lane on the right is blocked with the synthesized peptide.

Contact information

Orders: order@immunoway.com
 Support: tech@immunoway.com
 Telephone: 877-594-3616 (Toll Free), 408-747-0185
 Website: <http://www.immunoway.com>
 Address: 2200 Ringwood Ave San Jose, CA 95131 USA



Please scan the QR code to access additional product information:
GPR103 Rabbit pAb

For Research Use Only. Not for Use in Diagnostic Procedures.

[Antibody](#) | [ELISA Kits](#) | [Protein](#) | [Reagents](#)