

## GPR10 Rabbit pAb

CatalogNo: YT1946

### Key Features

#### Host Species

- Rabbit

#### Reactivity

- Human, Mouse, Rat

#### Applications

- WB, IF, ELISA

#### MW

- 41kD (Observed)

#### Isotype

- IgG

### Recommended Dilution Ratios

**WB 1:500-1:2000**

**IF 1:200-1:1000**

**ELISA 1:20000**

**Not yet tested in other applications.**

### Storage

#### Storage\*

-15°C to -25°C/1 year (Do not lower than -25°C)

#### Formulation

Liquid in PBS containing 50% glycerol, 0.5% BSA and 0.02% sodium azide.

### Basic Information

#### Clonality

Polyclonal

### Immunogen Information

#### Immunogen

The antiserum was produced against synthesized peptide derived from human PRLHR. AA range:184-233

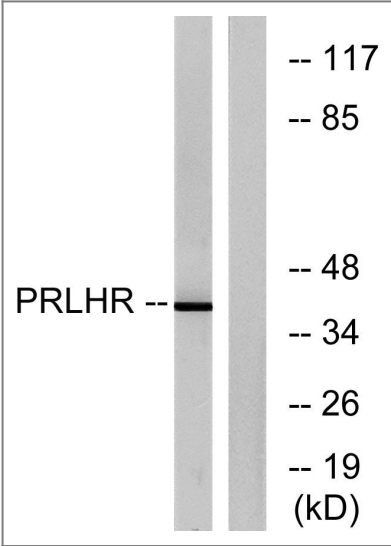
#### Specificity

GPR10 Polyclonal Antibody detects endogenous levels of GPR10 protein.

### Target Information

Gene name	PRLHR		
Protein Name	Prolactin-releasing peptide receptor		
	Organism	Gene ID	UniProt ID
	Human	<a href="#">2834;</a>	<a href="#">P49683;</a>
	Mouse	<a href="#">226278;</a>	<a href="#">Q6VMN6;</a>
	Rat	<a href="#">246075;</a>	<a href="#">Q64121;</a>
Cellular Localization	Cell membrane; Multi-pass membrane protein.		
Tissue specificity	Only detected in the pituitary gland and in all cell types of pituitary adenomas.		
Function	Function:Receptor for prolactin-releasing peptide (PrRP). Implicated in lactation, regulation of food intake and pain-signal processing.,induction:Repressed by bromocriptine, a dopamine agonist.,similarity:Belongs to the G-protein coupled receptor 1 family.,subunit:Interacts through its C-terminal region with the PDZ domain-containing proteins GRIP1, GRIP2 and PICK1. Interacts with PDZ domains 4 and 5 of GRIP1 and with the PDZ domain of PICK1.,tissue specificity:Only detected in the pituitary gland and in all cell types of pituitary adenomas.,		

| Validation Data



Western blot analysis of lysates from Jurkat cells, using PRLHR Antibody. The lane on the right is blocked with the synthesized peptide.

| Contact information

Orders: order@immunoway.com  
Support: tech@immunoway.com  
Telephone: 877-594-3616 (Toll Free), 408-747-0185  
Website: <http://www.immunoway.com>  
Address: 2200 Ringwood Ave San Jose, CA 95131 USA



Please scan the QR code  
to access additional  
product information:  
**GPR10 Rabbit pAb**

---

For Research Use Only. Not for Use in Diagnostic Procedures.

[Antibody](#) | [ELISA Kits](#) | [Protein](#) | [Reagents](#)