

## Glut3 Rabbit pAb

CatalogNo: YT1929

### Key Features

#### Host Species

- Rabbit

#### Reactivity

- Human, Mouse, Rat

#### Applications

- WB, IHC, IF, ELISA

#### MW

- 55kD (Observed)

#### Isotype

- IgG

### Recommended Dilution Ratios

**WB 1:500-1:2000**

**IHC 1:100-1:300**

**ELISA 1:10000**

**IF 1:50-200**

### Storage

**Storage\*** -15°C to -25°C/1 year (Do not lower than -25°C)

**Formulation** Liquid in PBS containing 50% glycerol, 0.5% BSA and 0.02% sodium azide.

### Basic Information

**Clonality** Polyclonal

### Immunogen Information

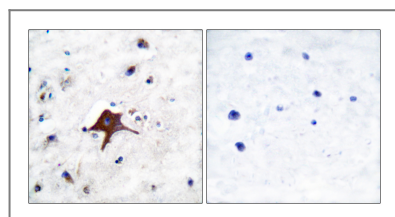
**Immunogen** The antiserum was produced against synthesized peptide derived from human GLUT3. AA range: 447-496

**Specificity** Glut3 Polyclonal Antibody detects endogenous levels of Glut3 protein.

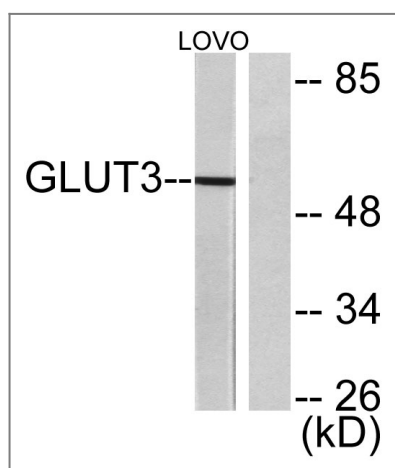
### Target Information

Gene name	SLC2A3		
Protein Name	Solute carrier family 2 facilitated glucose transporter member 3		
	Organism	Gene ID	UniProt ID
	Human	<a href="#">6515</a> ;	<a href="#">P11169</a> ;
	Mouse		<a href="#">P32037</a> ;
Cellular Localization	Cell membrane ; Multi-pass membrane protein . Perikaryon . Cell projection . Localized to densely spaced patches along neuronal processes. .		
Tissue specificity	Highly expressed in brain. Expressed in many tissues.		
Function	Function:Facilitative glucose transporter. Probably a neuronal glucose transporter.,similarity:Belongs to the major facilitator superfamily. Sugar transporter (TC 2.A.1.1) family. Glucose transporter subfamily.,tissue specificity:Highly expressed in brain. Expressed in many tissues.,		

## Validation Data



Immunohistochemistry analysis of paraffin-embedded human brain tissue, using GLUT3 Antibody. The picture on the right is blocked with the synthesized peptide.



Western blot analysis of lysates from LOVO cells, using GLUT3 Antibody. The lane on the right is blocked with the synthesized peptide.

## Contact information

Orders: order@immunoway.com  
Support: tech@immunoway.com  
Telephone: 877-594-3616 (Toll Free), 408-747-0185  
Website: http://www.immunoway.com  
Address: 2200 Ringwood Ave San Jose, CA 95131 USA



Please scan the QR code  
to access additional  
product information:  
**Glut3 Rabbit pAb**

---

For Research Use Only. Not for Use in Diagnostic Procedures.

[Antibody](#) | [ELISA Kits](#) | [Protein](#) | [Reagents](#)