

GluR-2 Rabbit pAb

CatalogNo: YT1923

Key Features

Host Species

- Rabbit

Reactivity

- Human, Mouse, Rat

Applications

- WB, IHC, IF, ELISA

MW

- 99kD (Observed)

Isotype

- IgG

Recommended Dilution Ratios

WB 1:500-1:2000

IHC 1:100-1:300

IF 1:200-1:1000

ELISA 1:20000

Not yet tested in other applications.

Storage

Storage*

-15°C to -25°C/1 year (Do not lower than -25°C)

Formulation

Liquid in PBS containing 50% glycerol, 0.5% BSA and 0.02% sodium azide.

Basic Information

Clonality

Polyclonal

Immunogen Information

Immunogen

The antiserum was produced against synthesized peptide derived from human GluR2. AA range: 834-883

Specificity

GluR-2 Polyclonal Antibody detects endogenous levels of GluR-2 protein.

| Target Information

Gene name GRIA2

Protein Name Glutamate receptor 2

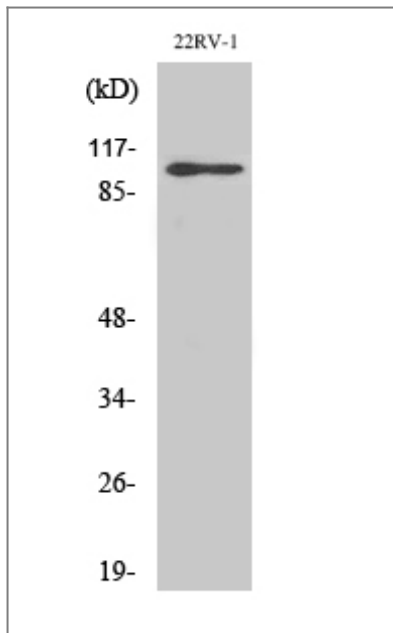
Organism	Gene ID	UniProt ID
Human	2891 ;	P42262 ;
Mouse	14800 ;	P23819 ;
Rat	29627 ;	P19491 ;

Cellular Localization Cell membrane ; Multi-pass membrane protein . Endoplasmic reticulum membrane ; Multi-pass membrane protein . Cell junction, synapse, postsynaptic cell membrane ; Multi-pass membrane protein . Cell junction, synapse, postsynaptic density membrane ; Multi-pass membrane protein . Interaction with CACNG2, CNIH2 and CNIH3 promotes cell surface expression (By similarity). Displays a somatodendritic localization and is excluded from axons in neurons (By similarity). .

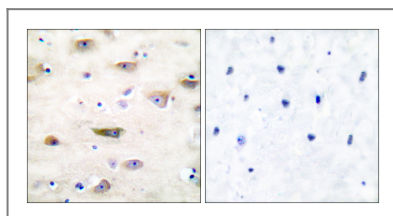
Tissue specificity Brain,

Function Function:Ionotropic glutamate receptor. L-glutamate acts as an excitatory neurotransmitter at many synapses in the central nervous system. Binding of the excitatory neurotransmitter L-glutamate induces a conformation change, leading to the opening of the cation channel, and thereby converts the chemical signal to an electrical impulse. The receptor then desensitizes rapidly and enters a transient inactive state, characterized by the presence of bound agonist.,miscellaneous:The postsynaptic actions of Glu are mediated by a variety of receptors that are named according to their selective agonists. This receptor binds AMPA (quisqualate) > glutamate > kainate.,PTM:Palmitoylated. Depalmitoylated upon glutamate stimulation. Cys-610 palmitoylation leads to Golgi retention and decreased cell surface expression. In contrast, Cys-836 palmitoylation does not affect cell surface expression but regulates stimulation-dependent endocytosis.,RNA editing:Partially edited. Fully edited in the brain. Heteromerically expressed edited GLUR2 (R) receptor complexes are impermeable to calcium, whereas the unedited (Q) forms are highly permeable to divalent ions.,similarity:Belongs to the glutamate-gated ion channel (TC 1.A.10) family.,subunit:Homotetramer or heterotetramer of pore-forming glutamate receptor subunits. Tetramers may be formed by the dimerization of dimers. May interact with MPP4. Forms a ternary complex with GRIP1 and CSPG4. Interacts with PRKCABP, GRIP1 and GRIP2.,

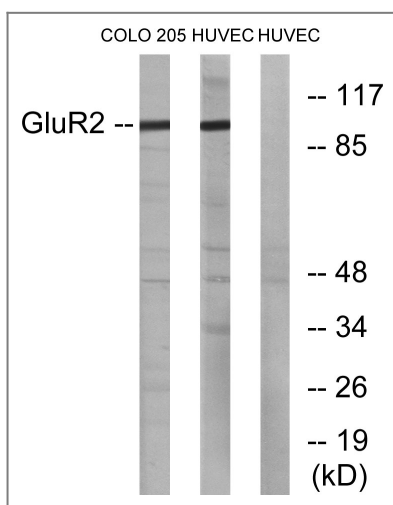
| Validation Data



Western Blot analysis of various cells using GluR-2 Polyclonal Antibody



Immunohistochemistry analysis of paraffin-embedded human brain tissue, using GluR2 Antibody. The picture on the right is blocked with the synthesized peptide.



Western blot analysis of lysates from COLO205 and HUVEC cells, using GluR2 Antibody. The lane on the right is blocked with the synthesized peptide.

Contact information

Orders: order@immunoway.com
 Support: tech@immunoway.com
 Telephone: 877-594-3616 (Toll Free), 408-747-0185
 Website: <http://www.immunoway.com>
 Address: 2200 Ringwood Ave San Jose, CA 95131 USA



Please scan the QR code to access additional product information:
GluR-2 Rabbit pAb

