

## GK2 Rabbit pAb

CatalogNo: YT1912

### | Key Features

#### Host Species

- Rabbit

#### Reactivity

- Human, Mouse

#### Applications

- WB, IHC, IF, ELISA

#### MW

- 61kD (Observed)

#### Isotype

- IgG

### | Recommended Dilution Ratios

**WB 1:500-1:2000**

**IHC 1:100-1:300**

**IF 1:200-1:1000**

**ELISA 1:20000**

**Not yet tested in other applications.**

### | Storage

#### Storage\*

-15°C to -25°C/1 year (Do not lower than -25°C)

#### Formulation

Liquid in PBS containing 50% glycerol, 0.5% BSA and 0.02% sodium azide.

### | Basic Information

#### Clonality

Polyclonal

### | Immunogen Information

#### Immunogen

The antiserum was produced against synthesized peptide derived from human GK2. AA range: 281-330

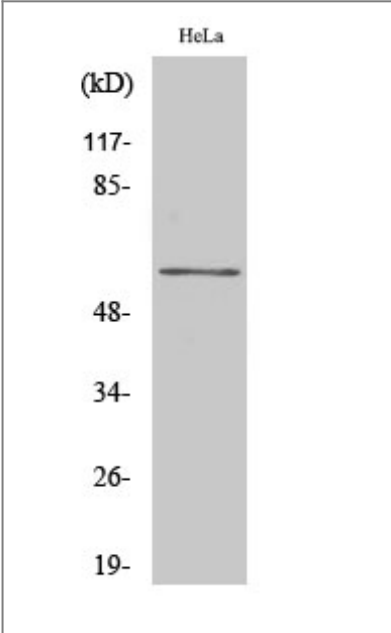
#### Specificity

GK2 Polyclonal Antibody detects endogenous levels of GK2 protein.

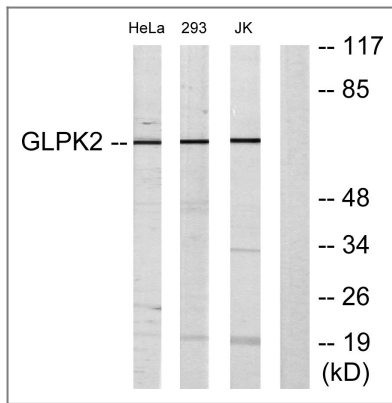
## | Target Information

Gene name	GK2		
Protein Name	Glycerol kinase 2		
	Organism	Gene ID	UniProt ID
	Human	<a href="#">2712</a> ;	<a href="#">Q14410</a> ;
	Mouse		<a href="#">Q9WU65</a> ;
Cellular Localization	Mitochondrion outer membrane ; Single-pass type IV membrane protein . Cytoplasm . In sperm the majority of the enzyme is bound to mitochondria. .		
Tissue specificity	Testis-specific (PubMed:33536340). Expressed in the midpiece of spermatozoa (PubMed:28852571).		
Function	Catalytic activity:ATP + glycerol = ADP + sn-glycerol 3-phosphate.,Function:Key enzyme in the regulation of glycerol uptake and metabolism.,pathway:Polyol metabolism; glycerol degradation via glycerol kinase pathway; sn-glycerol 3-phosphate from glycerol: step 1/1.,similarity:Belongs to the FGGY kinase family.,subcellular location:In sperm the majority of the enzyme is bound to mitochondria.,		

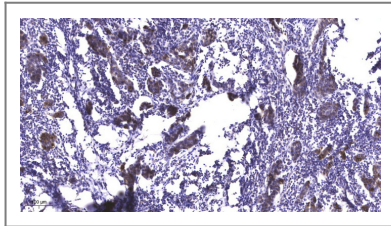
## | Validation Data



Western Blot analysis of Jurkat cells using GK2 Polyclonal Antibody



Western blot analysis of lysates from HeLa, 293, and Jurkat cells, using GK2 Antibody. The lane on the right is blocked with the synthesized peptide.



Immunohistochemical analysis of paraffin-embedded human Breast cancer. 1, Antibody was diluted at 1:200(4° overnight). 2, Tris-EDTA,pH9.0 was used for antigen retrieval. 3,Secondary antibody was diluted at 1:200(room temperature, 45min).

## Contact information

Orders: [order@immunoway.com](mailto:order@immunoway.com)  
 Support: [tech@immunoway.com](mailto:tech@immunoway.com)  
 Telephone: 877-594-3616 (Toll Free), 408-747-0185  
 Website: <http://www.immunoway.com>  
 Address: 2200 Ringwood Ave San Jose, CA 95131 USA



Please scan the QR code to access additional product information:  
**GK2 Rabbit pAb**

For Research Use Only. Not for Use in Diagnostic Procedures.

[Antibody](#) | [ELISA Kits](#) | [Protein](#) | [Reagents](#)