

GATA6 Rabbit pAb

CatalogNo: YT1865

Key Features

Host Species

- Rabbit

Reactivity

- Human, Mouse, Rat

Applications

- WB, ELISA

MW

- 45kD (Observed)

Isotype

- IgG

Storage

Storage* -15°C to -25°C/1 year (Do not lower than -25°C)**Formulation** Liquid in PBS containing 50% glycerol, 0.5% BSA and 0.02% sodium azide.

Recommended Dilution Ratios

WB 1:500-1:2000**ELISA 1:10000****Not yet tested in other applications.**

Basic Information

Clonality Polyclonal

Immunogen Information

Immunogen The antiserum was produced against synthesized peptide derived from human GATA6. AA range:461-510**Specificity** GATA-6 Polyclonal Antibody detects endogenous levels of GATA-6 protein.

Target Information

Gene name GATA6

Protein Name Transcription factor GATA-6

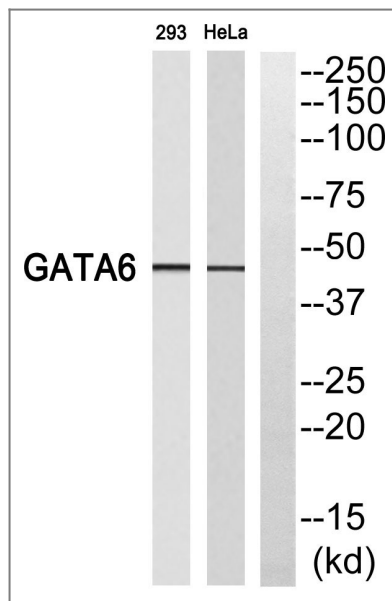
Organism	Gene ID	UniProt ID
Human	2627 ;	Q92908 ;
Mouse	14465 ;	Q61169 ;
Rat	29300 ;	P46153 ;

Cellular Localization Nucleus .

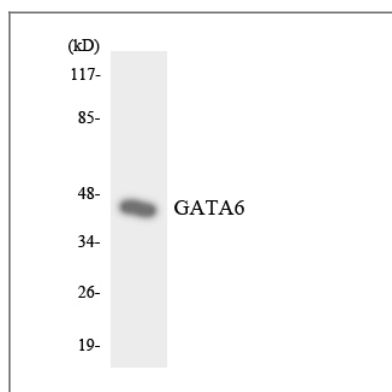
Tissue specificity Expressed in heart, gut and gut-derived tissues. Expressed in skin upper pilosebaceous unit. Expression is decreased or lost in acne lesions (PubMed:33082341).

Function Function:Thought to be important for regulating terminal differentiation and/or proliferation.,similarity:Contains 2 GATA-type zinc fingers.,tissue specificity:Expressed in heart, gut and gut-derived tissues.,

Validation Data



Western blot analysis of GATA6 Antibody. The lane on the right is blocked with the GATA6 peptide.



Western blot analysis of the lysates from HepG2 cells using GATA6 antibody.

| Contact information

Orders: order@immunoway.com
Support: tech@immunoway.com
Telephone: 877-594-3616 (Toll Free), 408-747-0185
Website: <http://www.immunoway.com>
Address: 2200 Ringwood Ave San Jose, CA 95131 USA



Please scan the QR code
to access additional
product information:
GATA6 Rabbit pAb

For Research Use Only. Not for Use in Diagnostic Procedures.

[Antibody](#) | [ELISA Kits](#) | [Protein](#) | [Reagents](#)