

## GASP-1 Rabbit pAb

CatalogNo: YT1856

### | Key Features

#### Host Species

- Rabbit

#### Reactivity

- Human, Mouse, Rat

#### Applications

- IHC, IF, ELISA

#### MW

- 157kD (Calculated)

#### Isotype

- IgG

### | Recommended Dilution Ratios

**IHC 1:100-1:300**

**IF 1:200-1:1000**

**ELISA 1:10000**

**Not yet tested in other applications.**

### | Storage

#### Storage\*

-15°C to -25°C/1 year (Do not lower than -25°C)

#### Formulation

Liquid in PBS containing 50% glycerol, 0.5% BSA and 0.02% sodium azide.

### | Basic Information

#### Clonality

Polyclonal

### | Immunogen Information

#### Immunogen

The antiserum was produced against synthesized peptide derived from human GASP1. AA range: 741-790

#### Specificity

GASP-1 Polyclonal Antibody detects endogenous levels of GASP-1 protein.

### | Target Information

**Gene name** GPRASP1

**Protein Name** G-protein coupled receptor-associated sorting protein 1

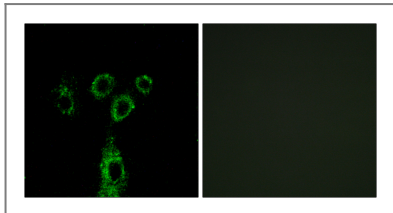
Organism	Gene ID	UniProt ID
Human	<a href="#">9737;</a>	<a href="#">Q5JY77;</a>
Mouse		<a href="#">Q5U4C1;</a>

**Cellular Localization** Cytoplasm .

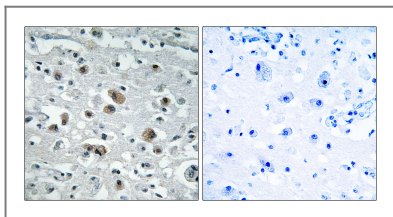
**Tissue specificity** Expressed in the brain, with lower expression in medulla, spinal cord and substantia nigra.

**Function** Function:May modulate lysosomal sorting and functional down-regulation of a variety of G-protein coupled receptors. Targets receptors for degradation in lysosomes.,similarity:Belongs to the GPRASP family.,subunit:Interacts with cytoplasmic tails of a variety of G-protein coupled receptors such as D2 dopamine receptor/DRD2 (By similarity), delta opioid receptor/OPRD1, beta-2 adrenergic receptor/ADRB2 and D4 dopamine receptor/DRD4. Interacts with PER1.,tissue specificity:Expressed in the brain, with lower expression in medulla, spinal cord and substantia nigra.,

## Validation Data



Immunofluorescence analysis of A549 cells, using GASP1 Antibody. The picture on the right is blocked with the synthesized peptide.



Immunohistochemistry analysis of paraffin-embedded human brain tissue, using GASP1 Antibody. The picture on the right is blocked with the synthesized peptide.

## Contact information

Orders: [order@immunoway.com](mailto:order@immunoway.com)  
Support: [tech@immunoway.com](mailto:tech@immunoway.com)  
Telephone: 877-594-3616 (Toll Free), 408-747-0185  
Website: <http://www.immunoway.com>  
Address: 2200 Ringwood Ave San Jose, CA 95131 USA



Please scan the QR code to access additional product information:  
**GASP-1 Rabbit pAb**

