

## Galectin-8 Rabbit pAb

CatalogNo: YT1840

### Key Features

#### Host Species

- Rabbit

#### Reactivity

- Human, Mouse

#### Applications

- WB, IHC, IF, ELISA

#### MW

- 36kD (Observed)

#### Isotype

- IgG

### Recommended Dilution Ratios

**WB 1:500-1:2000**

**IHC: 1:100-300**

**ELISA 1:20000**

**IF 1:100-300**

**Not yet tested in other applications.**

### Storage

#### Storage\*

-15°C to -25°C/1 year (Do not lower than -25°C)

#### Formulation

Liquid in PBS containing 50% glycerol, 0.5% BSA and 0.02% sodium azide.

### Basic Information

#### Clonality

Polyclonal

### Immunogen Information

#### Immunogen

The antiserum was produced against synthesized peptide derived from human LEG8. AA range: 61-110

#### Specificity

Galectin-8 Polyclonal Antibody detects endogenous levels of Galectin-8 protein.

## | Target Information

**Gene name** LGALS8

**Protein Name** Galectin-8

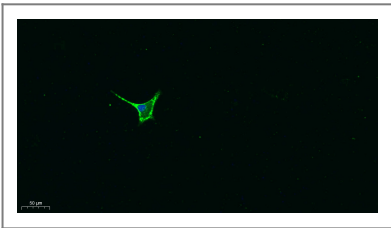
Organism	Gene ID	UniProt ID
Human	<a href="#">3964;</a>	<a href="#">O00214;</a>
Mouse	<a href="#">56048;</a>	<a href="#">Q9JL15;</a>

**Cellular Localization** Cytoplasmic vesicle . Cytoplasm, cytosol .

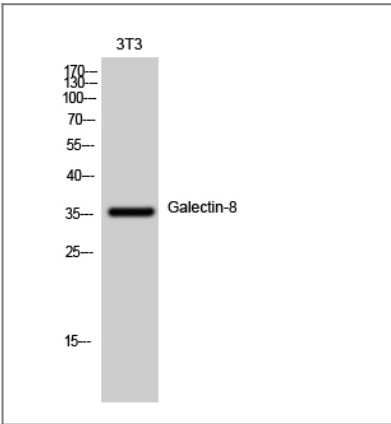
**Tissue specificity** Ubiquitous. Selective expression by prostate carcinomas versus normal prostate and benign prostatic hypertrophy.

**Function** Domain:Contains two homologous but distinct carbohydrate-binding domains.,online information:Galectin-8 C-terminal CRD,online information:Galectin-8 long isoform,similarity:Contains 2 galectin domains.,tissue specificity:Ubiquitous. Selective expression by prostate carcinomas versus normal prostate and benign prostatic hypertrophy.,

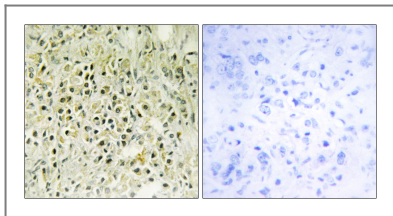
## | Validation Data



Immunofluorescence analysis of A549. 1,primary Antibody was diluted at 1:200(4°C overnight). 2, Goat Anti Rabbit IgG (H&L) - Alexa Fluor 488 Secondary antibody was diluted at 1:1000(room temperature, 50min).3, DAPI(blue) 10min.



Western Blot analysis of 3T3 cells using Galectin-8 Polyclonal Antibody diluted at 1:1000



Immunohistochemistry analysis of paraffin-embedded human prostate carcinoma tissue, using LEG8 Antibody. The picture on the right is blocked with the synthesized peptide.

## | Contact information

Orders: [order@immunoway.com](mailto:order@immunoway.com)  
Support: [tech@immunoway.com](mailto:tech@immunoway.com)  
Telephone: 877-594-3616 (Toll Free), 408-747-0185  
Website: <http://www.immunoway.com>  
Address: 2200 Ringwood Ave San Jose, CA 95131 USA



Please scan the QR code to access additional product information:

**Galectin-8 Rabbit pAb**

---

For Research Use Only. Not for Use in Diagnostic Procedures.

[Antibody](#) | [ELISA Kits](#) | [Protein](#) | [Reagents](#)