

Gab 2 Rabbit pAb

CatalogNo: YT1815

Orthogonal Validated 

Key Features

Host Species

- Rabbit

Reactivity

- Human, Mouse, Rat

Applications

- WB, IHC, IF, ELISA

MW

- 74kD (Observed)

Isotype

- IgG

Recommended Dilution Ratios

WB 1:500-1:2000**IHC 1:100-1:300****ELISA 1:40000****IF 1:50-200**

Storage

Storage* -15°C to -25°C/1 year (Do not lower than -25°C)**Formulation** Liquid in PBS containing 50% glycerol, 0.5% BSA and 0.02% sodium azide.

Basic Information

Clonality Polyclonal

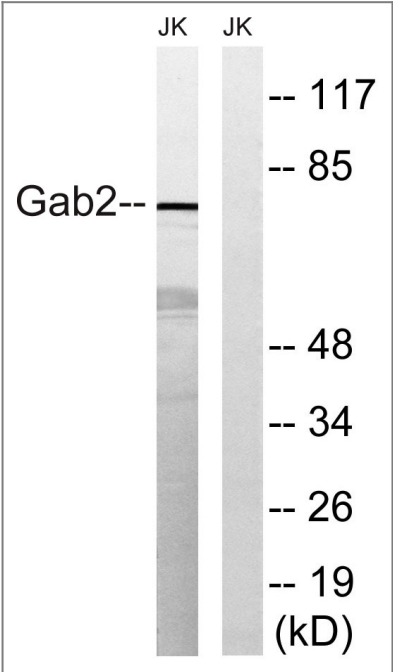
Immunogen Information

Immunogen The antiserum was produced against synthesized peptide derived from human Gab2. AA range: 589-638**Specificity** Gab 2 Polyclonal Antibody detects endogenous levels of Gab 2 protein.

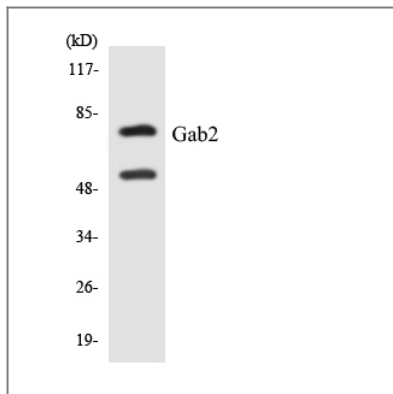
Target Information

Gene name	GAB2		
Protein Name	GRB2-associated-binding protein 2		
	Organism	Gene ID	UniProt ID
	Human	9846;	Q9UQC2;
	Mouse		Q9Z1S8;
	Rat	84477;	Q9EQH1;
Cellular Localization	Cytoplasm . Cell membrane .		
Tissue specificity	Brain,Clones donated by Kazusa DNA Research Inst.,		
Function	PTM:Dephosphorylated by PTPN11.,PTM:Phosphorylated on tyrosine residue(s) by the thrombopoietin receptor (TPOR), stem cell factor receptor (SCFR), and T-cell and B-cell antigen receptors, gp130, IL-2R and IL-3R.,similarity:Belongs to the GAB family.,similarity:Contains 1 PH domain.,subunit:Interacts with GRB2, PI-3 kinase and with other SH2-containing proteins.,		

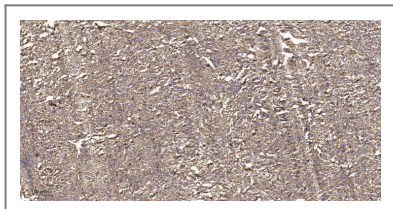
| Validation Data



Western blot analysis of lysates from Jurkat cells, treated with TNF 2500U/ml 30', using Gab2 Antibody. The lane on the right is blocked with the synthesized peptide.



Western blot analysis of the lysates from RAW264.7 cells using Gab2 antibody.



Immunohistochemical analysis of paraffin-embedded human small intestinal carcinoma tissue. 1, primary Antibody was diluted at 1:200 (4° overnight). 2, Sodium citrate pH 6.0 was used for antigen retrieval (>98°C, 20 min). 3, Secondary antibody was diluted at 1:200

Contact information

Orders: order@immunoway.com
 Support: tech@immunoway.com
 Telephone: 877-594-3616 (Toll Free), 408-747-0185
 Website: <http://www.immunoway.com>
 Address: 2200 Ringwood Ave San Jose, CA 95131 USA



Please scan the QR code to access additional product information:
Gab 2 Rabbit pAb

For Research Use Only. Not for Use in Diagnostic Procedures.

[Antibody](#) | [ELISA Kits](#) | [Protein](#) | [Reagents](#)