

## G2A Rabbit pAb

CatalogNo: YT1807

### | Key Features

#### Host Species

- Rabbit

#### Reactivity

- Human, Mouse, Monkey

#### Applications

- WB, IF, ELISA

#### MW

- 42kD (Observed)

#### Isotype

- IgG

### | Recommended Dilution Ratios

**WB 1:500-1:2000**

**ELISA 1:20000**

**IF 1:100-300**

**Not yet tested in other applications.**

### | Storage

#### Storage\*

-15°C to -25°C/1 year (Do not lower than -25°C)

#### Formulation

Liquid in PBS containing 50% glycerol, 0.5% BSA and 0.02% sodium azide.

### | Basic Information

#### Clonality

Polyclonal

### | Immunogen Information

#### Immunogen

The antiserum was produced against synthesized peptide derived from human GPR132. AA range: 293-342

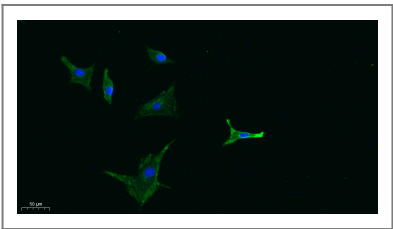
#### Specificity

G2A Polyclonal Antibody detects endogenous levels of G2A protein.

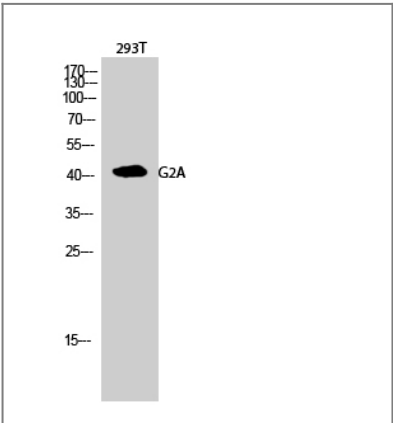
### | Target Information

<b>Gene name</b>	GPR132		
<b>Protein Name</b>	Probable G-protein coupled receptor 132		
	<b>Organism</b>	<b>Gene ID</b>	<b>UniProt ID</b>
	Human	<a href="#">29933</a> ;	<a href="#">Q9UNW8</a> ;
	Mouse	<a href="#">56696</a> ;	<a href="#">Q9Z282</a> ;
<b>Cellular Localization</b>	Cell membrane ; Multi-pass membrane protein . Internalized and accumulated in endosomal compartments. LPC triggers the relocalization from the endosomal compartment to the cell surface (By similarity). .		
<b>Tissue specificity</b>	Highly expressed in macrophages and hematopoietic tissues rich in lymphocytes, like spleen and thymus. Weakly expressed in heart and lung. In atherosclerotic plaques, expression is observed around the lipid core and at the shoulder region.		
<b>Function</b>	Caution:Was originally (PubMed:11474113) thought to be a receptor for lysophosphatidylcholine (LPC) and sphingosylphosphorylcholine (SPC), However, this work has been retracted.,Function:Receptor for an unknown ligand. Activates a G alpha protein, most likely G alpha(q). May be involved in apoptosis. Functions at the G2/M checkpoint to delay mitosis. May serve as a mechanism for T- and B-cells, and other cell types, to slow their proliferation and repair damaged DNA to ensure proper replication.,induction:By stress and DNA-damaging agents.,similarity:Belongs to the G-protein coupled receptor 1 family.,subcellular location:Internalized and accumulated in endosomal compartments. LPC triggers the relocalization from the endosomal compartment to the cell surface.,tissue specificity:Highly expressed in macrophages and hematopoietic tissues rich in lymphocytes, like spleen and thymus. Weakly expressed in heart and lung. In atherosclerotic plaques, expression is observed around the lipid core and at the shoulder region.,		

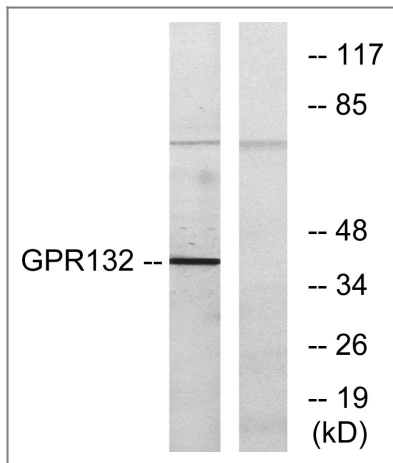
| Validation Data



Immunofluorescence analysis of A549. 1,primary Antibody was diluted at 1:200(4°C overnight). 2, Goat Anti Rabbit IgG (H&L) - Alexa Fluor 488 Secondary antibody was diluted at 1:1000(room temperature, 50min).3, DAPI(blue) 10min.



Western Blot analysis of 293T cells using G2A Polyclonal Antibody diluted at 1:500



Western blot analysis of lysates from COS7 cells, using GPR132 Antibody. The lane on the right is blocked with the synthesized peptide.

## Contact information

Orders: [order@immunoway.com](mailto:order@immunoway.com)  
Support: [tech@immunoway.com](mailto:tech@immunoway.com)  
Telephone: 877-594-3616 (Toll Free), 408-747-0185  
Website: <http://www.immunoway.com>  
Address: 2200 Ringwood Ave San Jose, CA 95131 USA



Please scan the QR code  
to access additional  
product information:  
**G2A Rabbit pAb**

For Research Use Only. Not for Use in Diagnostic Procedures.

[Antibody](#) | [ELISA Kits](#) | [Protein](#) | [Reagents](#)