

Fyb Rabbit pAb

CatalogNo: YT1804

| Key Features

Host Species

- Rabbit

Reactivity

- Human, Mouse, Rat

Applications

- WB, ELISA

MW

- 85kD (Observed)

Isotype

- IgG

| Recommended Dilution Ratios

WB 1:500-1:2000

ELISA 1:40000

Not yet tested in other applications.

| Storage

Storage*

-15°C to -25°C/1 year (Do not lower than -25°C)

Formulation

Liquid in PBS containing 50% glycerol, 0.5% BSA and 0.02% sodium azide.

| Basic Information

Clonality

Polyclonal

| Immunogen Information

Immunogen

Synthesized peptide derived from Fyb . at AA range: 620-700

Specificity

Fyb Polyclonal Antibody detects endogenous levels of Fyb protein.

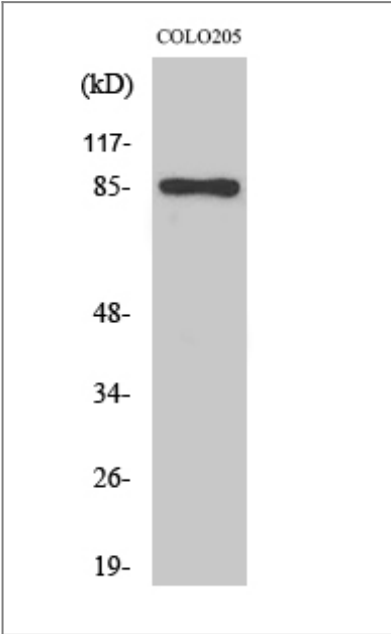
| Target Information

Gene name

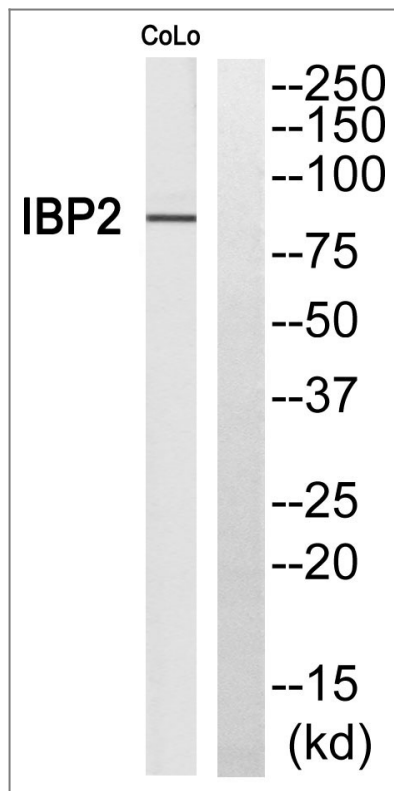
FYB

Protein Name	FYN-binding protein		
	Organism	Gene ID	UniProt ID
	Human	2533;	O15117;
	Mouse	23880;	O35601;
Cellular Localization	Cytoplasm . Nucleus . Cell junction . Colocalizes with TMEM47 at cell-cell contacts in podocytes. .		
Tissue specificity	Expressed in hematopoietic tissues such as myeloid and T-cells, spleen and thymus. Not expressed in B-cells, nor in non-lymphoid tissues.		
Function	Function:Acts as an adapter protein of the FYN and LCP2 signaling cascades in T cells. Modulates the expression of interleukin-2 (IL-2). Involved in platelet activation. Prevents the degradation of SKAP1 and SKAP2.,PTM:T-cell receptor ligation leads to increased tyrosine phosphorylation.,similarity:Contains 1 SH3 domain.,subunit:Part of a complex consisting of SKAP2, FYB and PTPNS1. Part of a complex consisting of SKAP2, FYB and LILRB3 (By similarity). Interacts with FYN, LCP2, SKAP1 and SKAP2.,tissue specificity:Expressed in hematopoietic tissues such as myeloid and T-cells, spleen and thymus. Not expressed in B-cells, nor in non-lymphoid tissues.,		

| Validation Data



Western Blot analysis of COLO205 cells using Fyb Polyclonal Antibody



Western blot analysis of FYB Antibody. The lane on the right is blocked with the FYB peptide.

Contact information

Orders: order@immunoway.com
 Support: tech@immunoway.com
 Telephone: 877-594-3616 (Toll Free), 408-747-0185
 Website: <http://www.immunoway.com>
 Address: 2200 Ringwood Ave San Jose, CA 95131 USA



Please scan the QR code to access additional product information:
Fyb Rabbit pAb

For Research Use Only. Not for Use in Diagnostic Procedures.

[Antibody](#) | [ELISA Kits](#) | [Protein](#) | [Reagents](#)