

FOLR1 Rabbit pAb

CatalogNo: YT1794

Key Features

Host Species

- Rabbit

Reactivity

- Human, Mouse, Rat

Applications

- WB, ELISA

MW

- 34kD (Observed)

Isotype

- IgG

Recommended Dilution Ratios

WB 1:500-1:2000

ELISA 1:5000

Not yet tested in other applications.

Storage

Storage*

-15°C to -25°C/1 year (Do not lower than -25°C)

Formulation

Liquid in PBS containing 50% glycerol, 0.5% BSA and 0.02% sodium azide.

Basic Information

Clonality

Polyclonal

Immunogen Information

Immunogen

The antiserum was produced against synthesized peptide derived from human FOLR1. AA range: 41-90

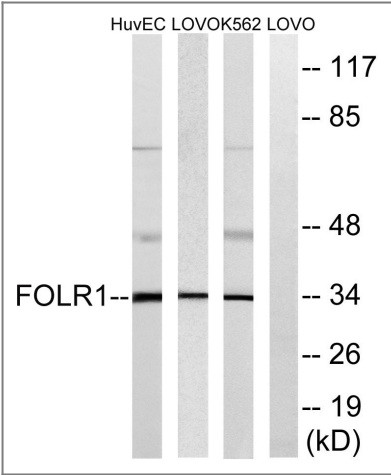
Specificity

FR-α Polyclonal Antibody detects endogenous levels of FR-α protein.

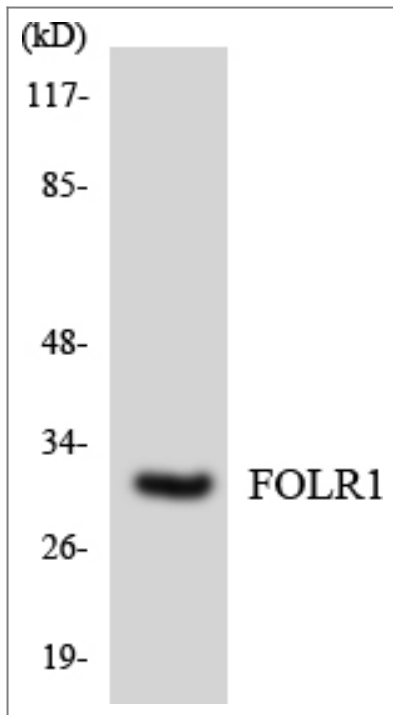
Target Information

Gene name	FOLR1		
Protein Name	Folate receptor alpha		
	Organism	Gene ID	UniProt ID
	Human	2348;	P15328;
	Mouse		P35846;
Cellular Localization	Cell membrane ; Lipid-anchor, GPI-anchor . Apical cell membrane ; Lipid-anchor, GPI-anchor . Basolateral cell membrane ; Lipid-anchor, GPI-like-anchor . Secreted . Cytoplasmic vesicle . Cytoplasmic vesicle, clathrin-coated vesicle . Endosome . Endocytosed into cytoplasmic vesicles and then recycled to the cell membrane. .		
Tissue specificity	Primarily expressed in tissues of epithelial origin. Expression is increased in malignant tissues. Expressed in kidney, lung and cerebellum. Detected in placenta and thymus epithelium.		
Function	Function:Binds to folate and reduced folic acid derivatives and mediates delivery of 5-methyltetrahydrofolate to the interior of cells.,PTM:Eight disulfide bonds are present.,PTM:The secreted form is derived from the membrane-bound form either by cleavage of the GPI anchor, or/and by proteolysis catalyzed by a metalloprotease.,similarity:Belongs to the folate receptor family.,tissue specificity:Exclusively expressed in tissues of epithelial origin. Expression is increased in malignant tissues. Expressed in kidney, lung and cerebellum.,		

| Validation Data



Western blot analysis of lysates from K562, LOVO, and HUVEC cells, using FOLR1 Antibody. The lane on the right is blocked with the synthesized peptide.



Western blot analysis of the lysates from HepG2 cells using FOLR1 antibody.

Contact information

Orders: order@immunoway.com
Support: tech@immunoway.com
Telephone: 877-594-3616 (Toll Free), 408-747-0185
Website: <http://www.immunoway.com>
Address: 2200 Ringwood Ave San Jose, CA 95131 USA



Please scan the QR code
to access additional
product information:
FOLR1 Rabbit pAb

For Research Use Only. Not for Use in Diagnostic Procedures.

[Antibody](#) | [ELISA Kits](#) | [Protein](#) | [Reagents](#)