

FRS3 Rabbit pAb

CatalogNo: YT1793

| Key Features

Host Species

- Rabbit

Reactivity

- Human, Monkey

Applications

- WB, ELISA

MW

- 54kD (Observed)

Isotype

- IgG

| Recommended Dilution Ratios

WB 1:500-1:2000

ELISA 1:40000

Not yet tested in other applications.

| Storage

Storage* -15°C to -25°C/1 year (Do not lower than -25°C)

Formulation Liquid in PBS containing 50% glycerol, 0.5% BSA and 0.02% sodium azide.

| Basic Information

Clonality Polyclonal

| Immunogen Information

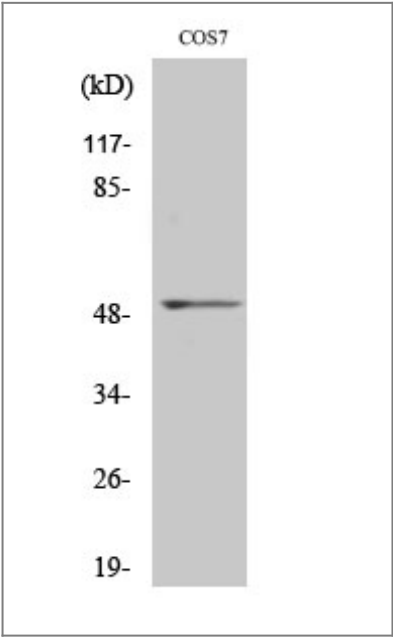
Immunogen The antiserum was produced against synthesized peptide derived from human FRS3. AA range: 191-240

Specificity FRS3 Polyclonal Antibody detects endogenous levels of FRS3 protein.

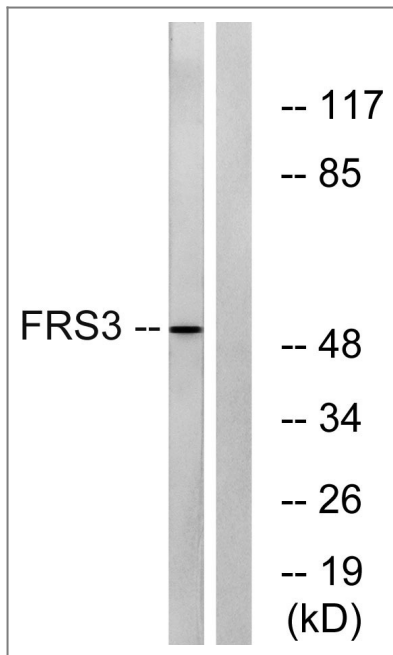
| Target Information

Gene name	FRS3		
Protein Name	Fibroblast growth factor receptor substrate 3		
	Organism	Gene ID	UniProt ID
	Human	10817 ;	O43559 ;
	Mouse		Q91WJ0 ;
Cellular Localization	Membrane; Lipid-anchor.		
Tissue specificity	Brain,Placenta,		
Function	Function:Adapter protein that links FGR and NGF receptors to downstream signaling pathways. Involved in the activation of MAP kinases. Down-regulates ERK2 signaling by interfering with the phosphorylation and nuclear translocation of ERK2.,PTM:Phosphorylated on tyrosine residues upon stimulation by BFGF or NGFB.,similarity:Contains 1 IRS-type PTB domain.,subunit:Binds NTRK1 (By similarity). Binds FGFR1, NGFR, GRB2, PTPN11 and ERK2.,		

| Validation Data



Western Blot analysis of various cells using FRS3 Polyclonal Antibody



Western blot analysis of lysates from COS7 cells, using FRS3 Antibody. The lane on the right is blocked with the synthesized peptide.

Contact information

Orders: order@immunoway.com
Support: tech@immunoway.com
Telephone: 877-594-3616 (Toll Free), 408-747-0185
Website: <http://www.immunoway.com>
Address: 2200 Ringwood Ave San Jose, CA 95131 USA



Please scan the QR code to access additional product information:
FRS3 Rabbit pAb

For Research Use Only. Not for Use in Diagnostic Procedures.

[Antibody](#) | [ELISA Kits](#) | [Protein](#) | [Reagents](#)