

## FoxN2 Rabbit pAb

CatalogNo: YT1755

### Key Features

#### Host Species

- Rabbit

#### Reactivity

- Human

#### Applications

- WB,IHC,IF,ELISA

#### MW

- 36kD (Observed)

#### Isotype

- IgG

### Recommended Dilution Ratios

**WB 1:500-1:2000**

**IHC 1:100-1:300**

**ELISA 1:20000**

**IF 1:50-200**

### Storage

#### Storage\*

-15°C to -25°C/1 year(Do not lower than -25°C)

#### Formulation

Liquid in PBS containing 50% glycerol, 0.5% BSA and 0.02% sodium azide.

### Basic Information

#### Clonality

Polyclonal

### Immunogen Information

#### Immunogen

The antiserum was produced against synthesized peptide derived from human FOXN2. AA range:341-390

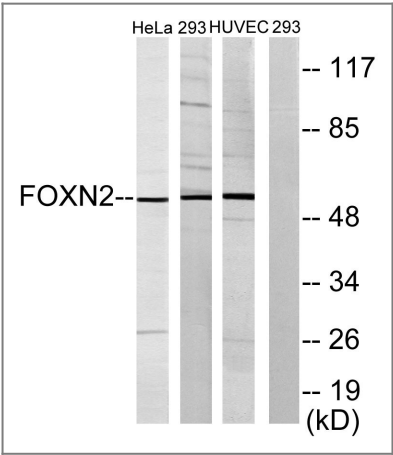
#### Specificity

FoxN2 Polyclonal Antibody detects endogenous levels of FoxN2 protein.

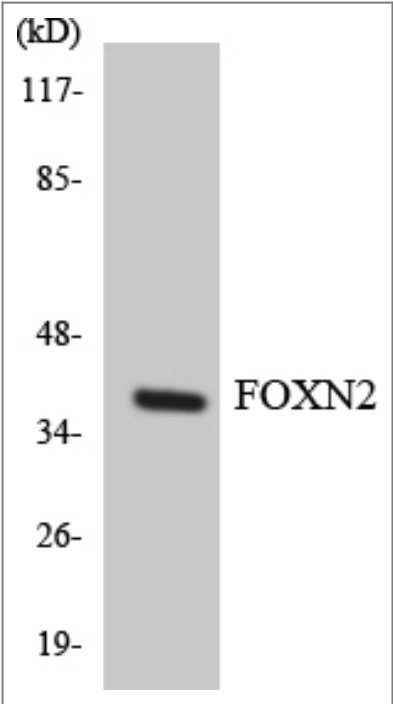
### Target Information

Gene name	FOXN2		
Protein Name	Forkhead box protein N2		
	Organism	Gene ID	UniProt ID
	Human	<a href="#">3344;</a>	<a href="#">P32314;</a>
Cellular Localization	Nucleus.		
Tissue specificity	PCR rescued clones,Placenta,		
Function	Function:Binds to the purine-rich region in HTLV-I LTR.,similarity:Contains 1 fork-head DNA-binding domain.,		

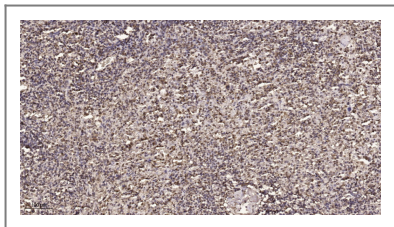
Validation Data



Western blot analysis of lysates from HeLa, 293, and HUVEC cells, using FOXN2 Antibody. The lane on the right is blocked with the synthesized peptide.



Western blot analysis of the lysates from K562 cells using FOXN2 antibody.



Immunohistochemical analysis of paraffin-embedded human spleen. 1, Tris-EDTA, pH 9.0 was used for antigen retrieval. 2 Antibody was diluted at 1:200 (4° overnight). 3, Secondary antibody was diluted at 1:200 (room temperature, 45 min).

## Contact information

Orders: [order@immunoway.com](mailto:order@immunoway.com)  
Support: [tech@immunoway.com](mailto:tech@immunoway.com)  
Telephone: 877-594-3616 (Toll Free), 408-747-0185  
Website: <http://www.immunoway.com>  
Address: 2200 Ringwood Ave San Jose, CA 95131 USA



Please scan the QR code to access additional product information:  
**FoxN2 Rabbit pAb**

---

For Research Use Only. Not for Use in Diagnostic Procedures.

[Antibody](#) | [ELISA Kits](#) | [Protein](#) | [Reagents](#)