

## FKBPL Rabbit pAb

CatalogNo: YT1714

### Key Features

#### Host Species

- Rabbit

#### Reactivity

- Human, Mouse, Rat

#### Applications

- WB, IHC, IF, ELISA

#### MW

- 38kD (Observed)

#### Isotype

- IgG

### Recommended Dilution Ratios

**WB 1:500-1:2000**

**IHC 1:100-1:300**

**ELISA 1:20000**

**IF 1:50-200**

### Storage

#### Storage\*

-15°C to -25°C/1 year (Do not lower than -25°C)

#### Formulation

Liquid in PBS containing 50% glycerol, 0.5% BSA and 0.02% sodium azide.

### Basic Information

#### Clonality

Polyclonal

### Immunogen Information

#### Immunogen

The antiserum was produced against synthesized peptide derived from human FKBPL. AA range: 251-300

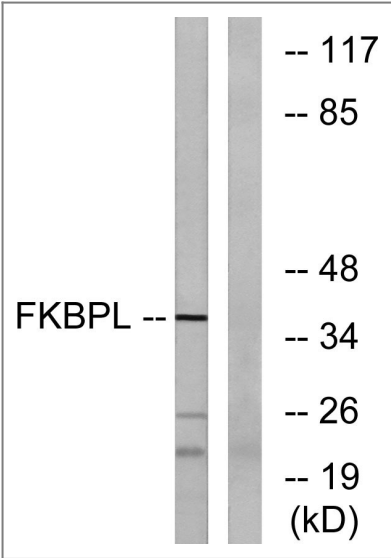
#### Specificity

FKBPL Polyclonal Antibody detects endogenous levels of FKBPL protein.

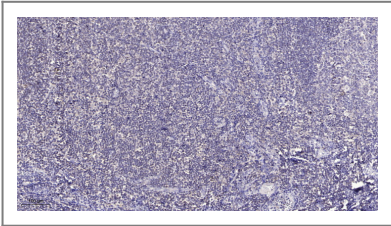
### Target Information

Gene name	FKBPL		
Protein Name	FK506-binding protein-like		
	Organism	Gene ID	UniProt ID
	Human	<a href="#">63943</a> ;	<a href="#">Q9UIM3</a> ;
	Mouse	<a href="#">56299</a> ;	<a href="#">O35450</a> ;
	Rat	<a href="#">406168</a> ;	<a href="#">Q6MG81</a> ;
Cellular Localization	endoplasmic reticulum membrane,cytosol,		
Tissue specificity	Ubiquitously expressed with higher levels in testis.		
Function	Function:May be involved in response to X-ray. Regulates p21 protein stability by binding to Hsp90 and p21.,PTM:Phosphorylated upon DNA damage, probably by ATM or ATR.,similarity:Contains 3 TPR repeats.,subunit:Forms a ternary complex with CDKN1A/p21 and HSP90AB1/Hsp90.,tissue specificity:Ubiquitously expressed with higher levels in testis.,		

| Validation Data



Western blot analysis of lysates from Jurkat cells, using FKBPL Antibody. The lane on the right is blocked with the synthesized peptide.



Immunohistochemical analysis of paraffin-embedded human tonsil. 1, Antibody was diluted at 1:200(4° overnight). 2, Tris-EDTA,pH9.0 was used for antigen retrieval. 3,Secondary antibody was diluted at 1:200(room temperature, 30min).

| Contact information

Orders: order@immunoway.com  
Support: tech@immunoway.com  
Telephone: 877-594-3616 (Toll Free), 408-747-0185  
Website: <http://www.immunoway.com>  
Address: 2200 Ringwood Ave San Jose, CA 95131 USA



Please scan the QR code  
to access additional  
product information:  
**FKBPL Rabbit pAb**

---

For Research Use Only. Not for Use in Diagnostic Procedures.

[Antibody](#) | [ELISA Kits](#) | [Protein](#) | [Reagents](#)