

FGF-22 Rabbit pAb

CatalogNo: YT1698

Key Features

Host Species

- Rabbit

Reactivity

- Human, Mouse, Rat

Applications

- WB, IHC, IF, ELISA

MW

- 20kD (Observed)

Isotype

- IgG

Recommended Dilution Ratios

WB 1:500-1:2000

IHC 1:100-1:300

IF 1:200-1:1000

ELISA 1:40000

Not yet tested in other applications.

Storage

Storage*

-15°C to -25°C/1 year (Do not lower than -25°C)

Formulation

Liquid in PBS containing 50% glycerol, 0.5% BSA and 0.02% sodium azide.

Basic Information

Clonality

Polyclonal

Immunogen Information

Immunogen

The antiserum was produced against synthesized peptide derived from human FGF22. AA range: 71-120

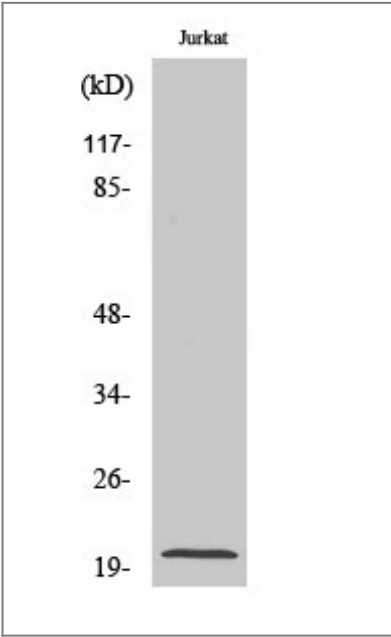
Specificity

FGF-22 Polyclonal Antibody detects endogenous levels of FGF-22 protein.

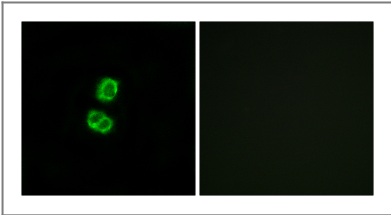
Target Information

Gene name	FGF22		
Protein Name	Fibroblast growth factor 22		
	Organism	Gene ID	UniProt ID
	Human	27006 ;	Q9HCT0 ;
	Mouse	67112 ;	Q9ESS2 ;
Cellular Localization	Secreted .		
Tissue specificity	Placenta,		
Function	Function:May be involved in hair development.,similarity:Belongs to the heparin-binding growth factors family.,subunit:Interacts with FGFBP1.,		

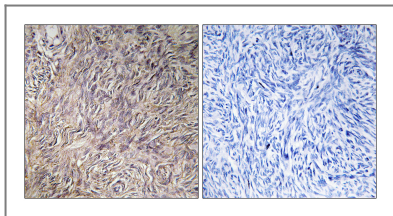
Validation Data



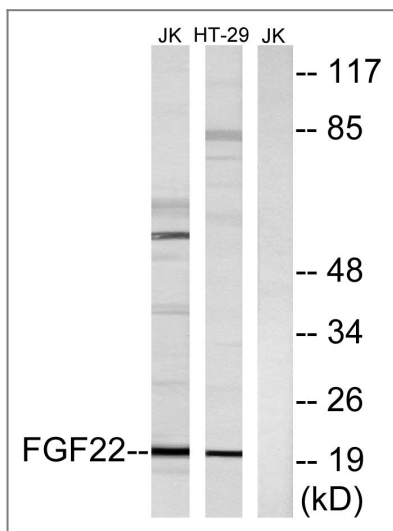
Western Blot analysis of various cells using FGF-22 Polyclonal Antibody diluted at 1:1000



Immunofluorescence analysis of MCF7 cells, using FGF22 Antibody. The picture on the right is blocked with the synthesized peptide.



Immunohistochemistry analysis of paraffin-embedded human ovary tissue, using FGF22 Antibody. The picture on the right is blocked with the synthesized peptide.



Western blot analysis of lysates from Jurkat and HT-29 cells, using FGF22 Antibody. The lane on the right is blocked with the synthesized peptide.

Contact information

Orders: order@immunoway.com
 Support: tech@immunoway.com
 Telephone: 877-594-3616 (Toll Free), 408-747-0185
 Website: <http://www.immunoway.com>
 Address: 2200 Ringwood Ave San Jose, CA 95131 USA



Please scan the QR code to access additional product information:
FGF-22 Rabbit pAb

For Research Use Only. Not for Use in Diagnostic Procedures.

[Antibody](#) | [ELISA Kits](#) | [Protein](#) | [Reagents](#)