

FBP3 Rabbit pAb

CatalogNo: YT1686

Key Features

Host Species

- Rabbit

Reactivity

- Human, Mouse, Rat

Applications

- WB, IHC, IF, ELISA

MW

- 60kD (Observed)

Isotype

- IgG

Recommended Dilution Ratios

WB 1:500-1:2000

IHC 1:100-1:300

ELISA 1:20000

IF 1:50-200

Storage

Storage*

-15°C to -25°C/1 year (Do not lower than -25°C)

Formulation

Liquid in PBS containing 50% glycerol, 0.5% BSA and 0.02% sodium azide.

Basic Information

Clonality

Polyclonal

Immunogen Information

Immunogen

The antiserum was produced against synthesized peptide derived from human FUBP3. AA range: 201-250

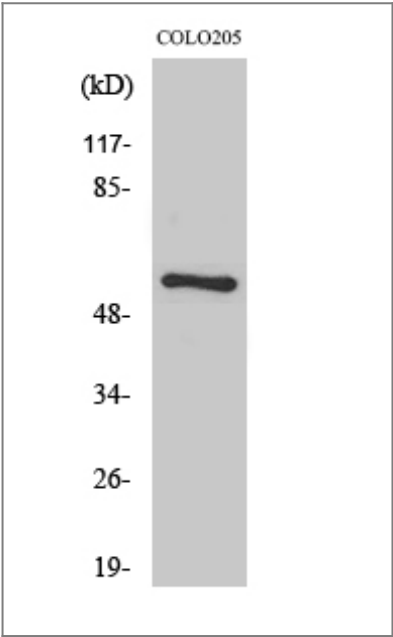
Specificity

FBP3 Polyclonal Antibody detects endogenous levels of FBP3 protein.

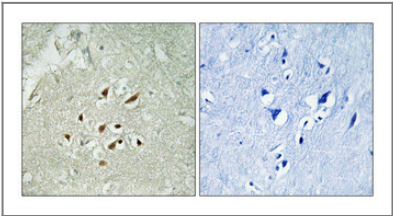
Target Information

Gene name	FUBP3		
Protein Name	Far upstream element-binding protein 3		
	Organism	Gene ID	UniProt ID
	Human	8939 ;	Q96I24 ;
Cellular Localization	Nucleus .		
Tissue specificity	Detected in a number of cell lines.		
Function	Function:May interact with single-stranded DNA from the far-upstream element (FUSE). May activate gene expression.,PTM:Phosphorylated upon DNA damage, probably by ATM or ATR.,similarity:Contains 4 KH domains.,tissue specificity:Detected in a number of cell lines.		

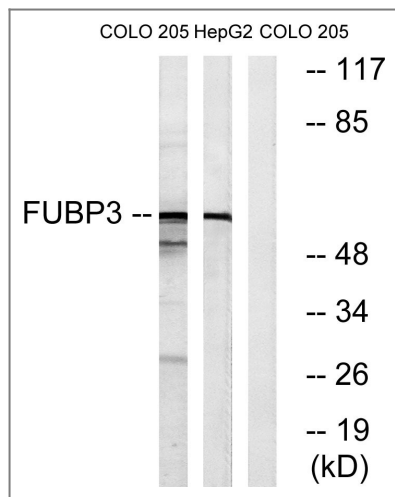
| Validation Data



Western Blot analysis of various cells using FBP3 Polyclonal Antibody cells nucleus extracted by Minute TM Cytoplasmic and Nuclear Fractionation kit (SC-003,Inventbiotech,MN,USA).



Immunohistochemical analysis of paraffin-embedded Human brain. Antibody was diluted at 1:100(4° overnight). High-pressure and temperature Tris-EDTA,pH8.0 was used for antigen retrieval. Negative contrl (right) obtaned from antibody was pre-absorbed by immunogen peptide.



Western blot analysis of lysates from COLO and HepG2 cells, using FUBP3 Antibody. The lane on the right is blocked with the synthesized peptide.

Contact information

Orders: order@immunoway.com
 Support: tech@immunoway.com
 Telephone: 877-594-3616 (Toll Free), 408-747-0185
 Website: <http://www.immunoway.com>
 Address: 2200 Ringwood Ave San Jose, CA 95131 USA



Please scan the QR code to access additional product information:
FBP3 Rabbit pAb

For Research Use Only. Not for Use in Diagnostic Procedures.

[Antibody](#) | [ELISA Kits](#) | [Protein](#) | [Reagents](#)