

FAST-1/2 Rabbit pAb

CatalogNo: YT1679

Key Features

Host Species

- Rabbit

Reactivity

- Human, Mouse

Applications

- WB, IF, ELISA

MW

- 40kD (Observed)

Isotype

- IgG

Recommended Dilution Ratios

WB 1:500-1:2000

IF 1:200-1:1000

ELISA 1:10000

Not yet tested in other applications.

Storage

Storage*

-15°C to -25°C/1 year (Do not lower than -25°C)

Formulation

Liquid in PBS containing 50% glycerol, 0.5% BSA and 0.02% sodium azide.

Basic Information

Clonality

Polyclonal

Immunogen Information

Immunogen

The antiserum was produced against synthesized peptide derived from human FOXH1. AA range:10-59

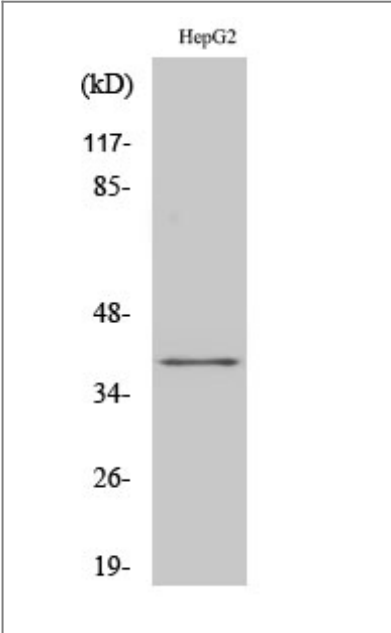
Specificity

FAST-1/2 Polyclonal Antibody detects endogenous levels of FAST-1/2 protein.

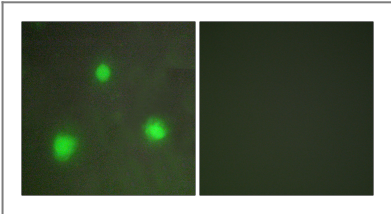
Target Information

Gene name	FOXH1		
Protein Name	Forkhead box protein H1		
	Organism	Gene ID	UniProt ID
	Human	8928;	O75593;
	Mouse	14106;	O88621;
Cellular Localization	Nucleus.		
Tissue specificity	Ubiquitous.		
Function	Domain:The FM region is required for binding smad2/smad4 complexes. FM2 is more effective than FM1 and only interacts with phosphorylated smad2 that is in an activated smad complex.,Function:Transcriptional activator. Recognizes and binds to the DNA sequence 5'-TGT[GT][GT]ATT-3'. Required for induction of the goosecoid (GSC) promoter by TGF-beta or activin signaling. Forms a transcriptionally active complex containing FOXH1/SMAD2/SMAD4 on a site on the GSC promoter called TARE (TGF-beta/activin response element).,similarity:Contains 1 fork-head DNA-binding domain.,subunit:Interacts with the MH2 domains of SMAD2 and SMAD3.,tissue specificity:Ubiquitous.,		

Validation Data



Western Blot analysis of various cells using FAST-1/2 Polyclonal Antibody cells nucleus extracted by Minute TM Cytoplasmic and Nuclear Fractionation kit (SC-003,Inventbiotech,MN,USA).



Immunofluorescence analysis of A549 cells, using FOXH1 Antibody. The picture on the right is blocked with the synthesized peptide.

| Contact information

Orders: order@immunoway.com
Support: tech@immunoway.com
Telephone: 877-594-3616 (Toll Free), 408-747-0185
Website: <http://www.immunoway.com>
Address: 2200 Ringwood Ave San Jose, CA 95131 USA



Please scan the QR code
to access additional
product information:
**FAST-1/2 Rabbit
pAb**

For Research Use Only. Not for Use in Diagnostic Procedures.

[Antibody](#) | [ELISA Kits](#) | [Protein](#) | [Reagents](#)