

## FAF1 Rabbit pAb

CatalogNo: YT1658

### Key Features

#### Host Species

- Rabbit

#### Reactivity

- Human, Mouse, Rat

#### Applications

- WB, ELISA

#### MW

- 75kD (Observed)

#### Isotype

- IgG

### Recommended Dilution Ratios

**WB 1:500-1:2000**

**ELISA 1:5000**

**Not yet tested in other applications.**

### Storage

#### Storage\*

-15°C to -25°C/1 year (Do not lower than -25°C)

#### Formulation

Liquid in PBS containing 50% glycerol, 0.5% BSA and 0.02% sodium azide.

### Basic Information

#### Clonality

Polyclonal

### Immunogen Information

#### Immunogen

The antiserum was produced against synthesized peptide derived from human FAF1. AA range: 531-580

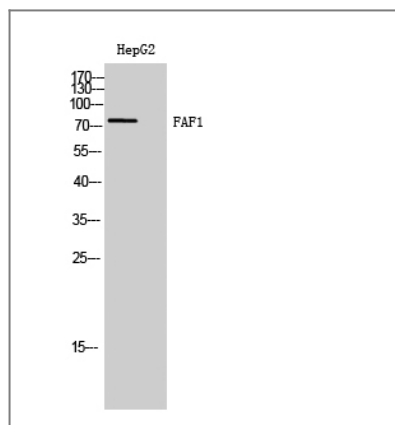
#### Specificity

FAF1 Polyclonal Antibody detects endogenous levels of FAF1 protein.

### Target Information

<b>Gene name</b>	FAF1		
<b>Protein Name</b>	FAS-associated factor 1		
	<b>Organism</b>	<b>Gene ID</b>	<b>UniProt ID</b>
	Human	<a href="#">11124;</a>	<a href="#">Q9UNN5;</a>
	Mouse	<a href="#">14084;</a>	<a href="#">P54731;</a>
	Rat	<a href="#">140657;</a>	<a href="#">Q924K2;</a>
<b>Cellular Localization</b>	Nucleus .		
<b>Tissue specificity</b>	Most abundant in testis, slightly less abundant in skeletal muscle and heart, followed by prostate, thymus, ovary, small intestine, and colon. Not detected in the peripheral blood leukocytes.		
<b>Function</b>	Function:Potentiates but cannot initiate FAS-induced apoptosis.,similarity:Contains 1 UBX domain.,subunit:Specifically interacts with the cytoplasmic domain of FAS.,tissue specificity:Most abundant in testis, slightly less abundant in skeletal muscle and heart, followed by prostate, thymus, ovary, small intestine, and colon. Not detected in the peripheral blood leukocytes.,		

## Validation Data



Western Blot analysis of HepG2 cells using FAF1 Polyclonal Antibody

## Contact information

Orders: [order@immunoway.com](mailto:order@immunoway.com)  
 Support: [tech@immunoway.com](mailto:tech@immunoway.com)  
 Telephone: 877-594-3616 (Toll Free), 408-747-0185  
 Website: <http://www.immunoway.com>  
 Address: 2200 Ringwood Ave San Jose, CA 95131 USA



Please scan the QR code  
 to access additional  
 product information:  
**FAF1 Rabbit pAb**

