

ETO-2 Rabbit pAb

CatalogNo: YT1643

Key Features

Host Species

- Rabbit

Reactivity

- Human, Mouse

Applications

- IHC, IF, ELISA

MW

- 71kD (Calculated)

Isotype

- IgG

Recommended Dilution Ratios

IHC 1:100-1:300

ELISA 1:20000

IF 1:50-200

Storage

Storage* -15°C to -25°C/1 year (Do not lower than -25°C)

Formulation Liquid in PBS containing 50% glycerol, 0.5% BSA and 0.02% sodium azide.

Basic Information

Clonality Polyclonal

Immunogen Information

Immunogen The antiserum was produced against synthesized peptide derived from human MTG16. AA range: 261-310

Specificity ETO-2 Polyclonal Antibody detects endogenous levels of ETO-2 protein.

Target Information

Gene name CBFA2T3

Protein Name Protein CBFA2T3

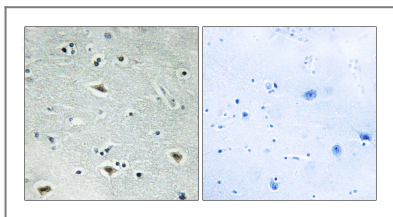
Organism	Gene ID	UniProt ID
Human	863;	O75081;
Mouse	12398;	O54972;

Cellular Localization [Isoform 1]: Nucleus, nucleolus. The RUNX1-CBFA2T3 fusion protein localizes to the nucleoplasm.; [Isoform 2]: Nucleus, nucleoplasm . Golgi apparatus membrane .

Tissue specificity Widely expressed with higher expression in heart, pancreas, skeletal muscle, spleen, thymus and peripheral blood leukocytes. Expressed in hematopoietic cells (at protein level).

Function Disease:A chromosomal aberration involving CBFA2T3 is found in therapy-related myeloid malignancies. Translocation t(16;21)(q24;q22) that forms a RUNX1-CBFA2T3 fusion protein.,Function:Functions as a transcriptional repressor. Regulates the proliferation and the differentiation of erythroid progenitors by repressing the expression of TAL1 target genes. Plays a role in granulocyte differentiation. Isoform 2 functions as an A-kinase-anchoring protein (PubMed:11823486).,induction:Down-regulated by all-trans retinoic acid.,similarity:Belongs to the CBFA2T family.,similarity:Contains 1 MYND-type zinc finger.,similarity:Contains 1 TAFH (NHR1) domain.,subcellular location:The RUNX1-CBFA2T3 fusion protein localizes to the nucleoplasm.,subunit:Component of a TAL-1 complex composed at least of CBFA2T3, LDB1, TAL1 and TCF3 (By similarity). Heterodimer with RUNX1T1 and CBFA2T2. Interacts with ERBB4, HDAC1, HDAC2, HDAC3, HDAC6, HDAC8, NCOR1, NCOR2, and ZNF652. According to Hoogeveen et al (PubMed:12242670) may not interact with HDAC6. Isoform 2 interacts with PRKAR2A, PDE7A and probably PDE4A.,tissue specificity:Widely expressed with higher expression in heart, pancreas, skeletal muscle, spleen, thymus and peripheral blood leukocytes. Expressed in hematopoietic cells (at protein level).,

Validation Data



Immunohistochemistry analysis of paraffin-embedded human brain tissue, using MTG16 Antibody. The picture on the right is blocked with the synthesized peptide.

Contact information

Orders: order@immunoway.com
Support: tech@immunoway.com
Telephone: 877-594-3616 (Toll Free), 408-747-0185
Website: <http://www.immunoway.com>
Address: 2200 Ringwood Ave San Jose, CA 95131 USA



Please scan the QR code to access additional product information:
ETO-2 Rabbit pAb

