

## ERK 1 Rabbit pAb

CatalogNo: YT1622

Orthogonal Validated 

### Key Features

#### Host Species

- Rabbit

#### Reactivity

- Human, Mouse, Rat

#### Applications

- WB, IF, ELISA

#### MW

- 45kD (Observed)

#### Isotype

- IgG

### Recommended Dilution Ratios

**WB 1:500-1:2000****IF 1:200-1:1000****ELISA 1:40000****Not yet tested in other applications.**

### Storage

**Storage\***

-15°C to -25°C/1 year (Do not lower than -25°C)

**Formulation**

Liquid in PBS containing 50% glycerol, 0.5% BSA and 0.02% sodium azide.

### Basic Information

**Clonality**

Polyclonal

### Immunogen Information

**Immunogen**

The antiserum was produced against synthesized peptide derived from human p44 MAPK. AA range:161-210

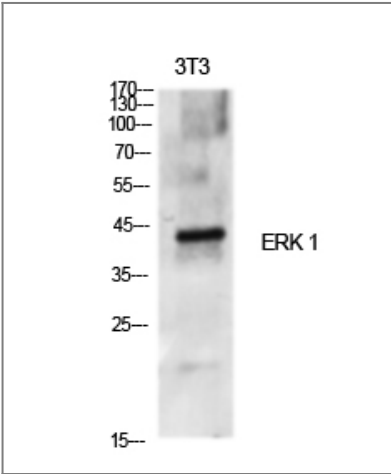
**Specificity**

ERK 1 Polyclonal Antibody detects endogenous levels of ERK 1 protein.

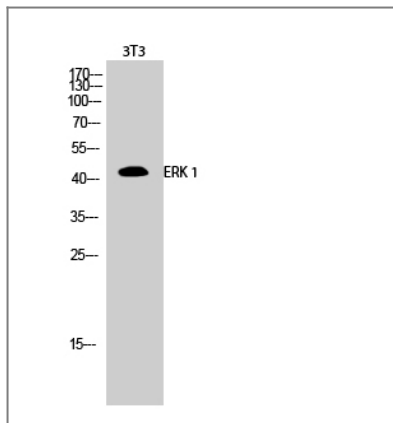
### Target Information

Gene name	MAPK3		
Protein Name	Mitogen-activated protein kinase 3		
	Organism	Gene ID	UniProt ID
	Human	<a href="#">5595</a> ;	<a href="#">P27361</a> ;
	Mouse	<a href="#">26417</a> ;	<a href="#">Q63844</a> ;
	Rat	<a href="#">50689</a> ;	<a href="#">P21708</a> ;
Cellular Localization	Cytoplasm . Nucleus. Membrane, caveola . Cell junction, focal adhesion . Autophosphorylation at Thr-207 promotes nuclear localization (PubMed:19060905). PEA15-binding redirects the biological outcome of MAPK3 kinase-signaling by sequestering MAPK3 into the cytoplasm (By similarity). .		
Tissue specificity	Epithelium, Eye, Hepatoma, Human cervix, Lymph,		
Function	Catalytic activity:ATP + a protein = ADP + a phosphoprotein., cofactor:Magnesium., Domain:The TXY motif contains the threonine and tyrosine residues whose phosphorylation activates the MAP kinases., enzyme regulation:Activated by tyrosine phosphorylation in response to insulin and NGF., Function:Involved in both the initiation and regulation of meiosis, mitosis, and postmitotic functions in differentiated cells by phosphorylating a number of transcription factors such as ELK-1. Phosphorylates EIF4EBP1; required for initiation of translation. Phosphorylates microtubule-associated protein 2 (MAP2). Phosphorylates SPZ1 (By similarity). Phosphorylates heat shock factor protein 4 (HSF4)., PTM:Dually phosphorylated on Thr-202 and Tyr-204, which activates the enzyme., similarity:Belongs to the protein kinase superfamily., similarity:Belongs to the protein kinase superfamily. CMGC Ser/Thr protein kinase family. MAP kinase subfamily., similarity:Contains 1 protein kinase domain., subunit:Interacts with MORG1 (By similarity). Binds to HIV-1 Nef. This interaction inhibits its kinase activity. Interacts with HSF4 and NISCH.,		

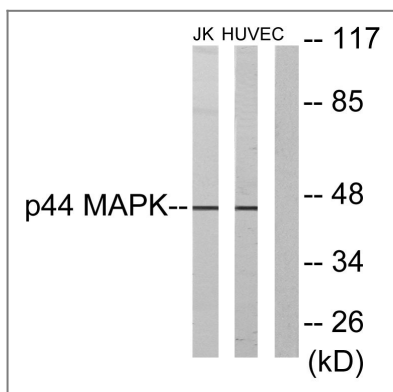
| Validation Data



Western Blot analysis of various cells using ERK 1 Polyclonal Antibody diluted at 1:500



Western Blot analysis of 3T3 cells using ERK 1 Polyclonal Antibody diluted at 1:500



Western blot analysis of lysates from Jurkat and HUVEC cells, using p44 MAPK Antibody. The lane on the right is blocked with the synthesized peptide.

## Contact information

Orders: [order@immunoway.com](mailto:order@immunoway.com)  
 Support: [tech@immunoway.com](mailto:tech@immunoway.com)  
 Telephone: 877-594-3616 (Toll Free), 408-747-0185  
 Website: <http://www.immunoway.com>  
 Address: 2200 Ringwood Ave San Jose, CA 95131 USA



Please scan the QR code to access additional product information:  
**ERK 1 Rabbit pAb**

For Research Use Only. Not for Use in Diagnostic Procedures.

[Antibody](#) | [ELISA Kits](#) | [Protein](#) | [Reagents](#)