

## ERI1 Rabbit pAb

CatalogNo: YT1621

### | Key Features

#### Host Species

- Rabbit

#### Reactivity

- Human, Mouse, Rat

#### Applications

- WB, ELISA

#### MW

- 37kD (Observed)

#### Isotype

- IgG

### | Recommended Dilution Ratios

**WB 1:500-1:2000**

**ELISA 1:5000**

**Not yet tested in other applications.**

### | Storage

#### Storage\*

-15°C to -25°C/1 year (Do not lower than -25°C)

#### Formulation

Liquid in PBS containing 50% glycerol, 0.5% BSA and 0.02% sodium azide.

### | Basic Information

#### Clonality

Polyclonal

### | Immunogen Information

#### Immunogen

The antiserum was produced against synthesized peptide derived from human ERI1. AA range: 261-310

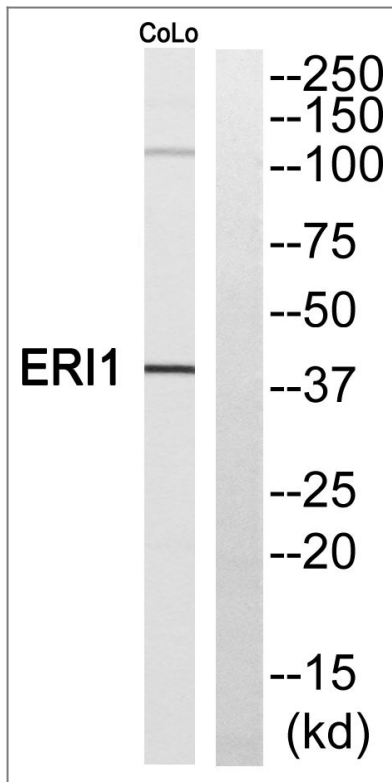
#### Specificity

ERI1 Polyclonal Antibody detects endogenous levels of ERI1 protein.

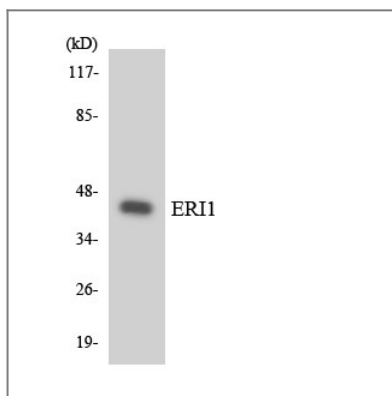
### | Target Information

Gene name	ERI1		
Protein Name	3'-5' exoribonuclease 1		
	Organism	Gene ID	UniProt ID
	Human	<a href="#">90459</a> ;	<a href="#">Q8IV48</a> ;
	Mouse	<a href="#">67276</a> ;	<a href="#">Q7TMF2</a> ;
	Rat	<a href="#">361159</a> ;	<a href="#">Q5FVR4</a> ;
Cellular Localization	Cytoplasm . Nucleus . Nucleus, nucleolus .		
Tissue specificity	Testis,		
Function	cofactor:Binds 2 magnesium ions per subunit.,enzyme regulation:Although it can bind simultaneously with SLBP to the 3'-end of histone mRNA, the presence of SLBP prevents the exonuclease activity.,Function:RNA exonuclease that binds to the 3'-end of histone mRNAs and probably degrades them, suggesting that it plays an essential role in histone mRNA decay after replication. Also able to degrade the 3'-overhangs of short interfering RNAs (siRNAs) in vitro, suggesting a possible role as regulator of RNA interference (RNAi). Required for 5.8S rRNA 3'-end processing.,sequence Caution:Translated as Leu.,similarity:Contains 1 exonuclease domain.,similarity:Contains 1 SAP domain.,subunit:Binds with high affinity to the stem-loop structure of replication-dependent histone pre-mRNAs. Requires the 5'-ACCCA-3' sequence present in stem-loop structure. Able to bind other mRNAs. Binds to 40S and 60S ribosomal subunits and to 80S assembled ribosomes. Also binds to 5.8s ribosomal RNA.,		

| Validation Data



Western blot analysis of ERI1 Antibody. The lane on the right is blocked with the ERI1 peptide.



Western blot analysis of the lysates from HUVEC cells using ERI1 antibody.

## Contact information

Orders: [order@immunoway.com](mailto:order@immunoway.com)  
 Support: [tech@immunoway.com](mailto:tech@immunoway.com)  
 Telephone: 877-594-3616 (Toll Free), 408-747-0185  
 Website: <http://www.immunoway.com>  
 Address: 2200 Ringwood Ave San Jose, CA 95131 USA



Please scan the QR code  
 to access additional  
 product information:  
**ERI1 Rabbit pAb**