

ERGIC-3 Rabbit pAb

CatalogNo: YT1620

Key Features

Host Species

- Rabbit

Reactivity

- Human, Mouse

Applications

- WB, IHC, IF, ELISA

MW

- 43kD (Observed)

Isotype

- IgG

Recommended Dilution Ratios

WB 1:500-1:2000

IHC 1:100-1:300

IF 1:200-1:1000

ELISA 1:20000

Not yet tested in other applications.

Storage

Storage*

-15°C to -25°C/1 year (Do not lower than -25°C)

Formulation

Liquid in PBS containing 50% glycerol, 0.5% BSA and 0.02% sodium azide.

Basic Information

Clonality

Polyclonal

Immunogen Information

Immunogen

The antiserum was produced against synthesized peptide derived from human ERGIC3. AA range: 321-370

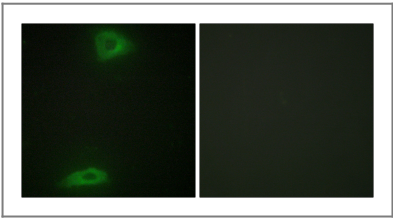
Specificity

ERGIC-3 Polyclonal Antibody detects endogenous levels of ERGIC-3 protein.

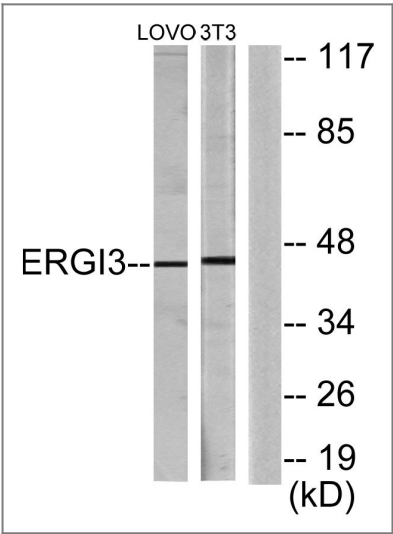
Target Information

Gene name	ERGIC3		
Protein Name	Endoplasmic reticulum-Golgi intermediate compartment protein 3		
	Organism	Gene ID	UniProt ID
	Human	51614 ;	Q9Y282 ;
	Mouse	66366 ;	Q9CQE7 ;
Cellular Localization	Endoplasmic reticulum-Golgi intermediate compartment membrane ; Multi-pass membrane protein . Golgi apparatus, cis-Golgi network membrane ; Multi-pass membrane protein . Endoplasmic reticulum membrane ; Multi-pass membrane protein . Cycles between the endoplasmic reticulum and the Golgi.		
Tissue specificity	Brain,Embryo,Fetal liver,Liver,Mammary gland,Skin,		
Function	Function:Possible role in transport between endoplasmic reticulum and Golgi.,similarity:Belongs to the ERGIC family.,subcellular location:Cycles between the endoplasmic reticulum and the Golgi.,subunit:Interacts with ERGIC1/ERGIC32.,		

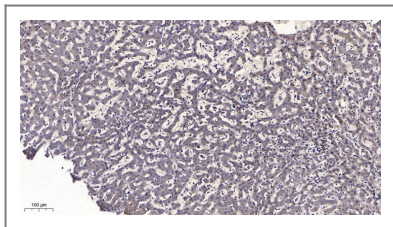
Validation Data



Immunofluorescence analysis of HepG2 cells, using ERG13 Antibody. The picture on the right is blocked with the synthesized peptide.



Western blot analysis of lysates from LOVO and NIH/3T3 cells, using ERG13 Antibody. The lane on the right is blocked with the synthesized peptide.



Immunohistochemical analysis of paraffin-embedded human liver cancer. 1, Antibody was diluted at 1:200(4° overnight). 2, Tris-EDTA,pH9.0 was used for antigen retrieval. 3,Secondary antibody was diluted at 1:200(room temperature, 45min).

| Contact information

Orders: order@immunoway.com
Support: tech@immunoway.com
Telephone: 877-594-3616 (Toll Free), 408-747-0185
Website: <http://www.immunoway.com>
Address: 2200 Ringwood Ave San Jose, CA 95131 USA



Please scan the QR code
to access additional
product information:
ERGIC-3 Rabbit pAb

For Research Use Only. Not for Use in Diagnostic Procedures.

[Antibody](#) | [ELISA Kits](#) | [Protein](#) | [Reagents](#)