

ERCC4 Rabbit pAb

CatalogNo: YT1615

Key Features

Host Species

- Rabbit

Reactivity

- Human, Mouse

Applications

- WB, ELISA

MW

- 103kD (Observed)

Isotype

- IgG

Recommended Dilution Ratios

WB 1:500-1:2000

ELISA 1:10000

Not yet tested in other applications.

Storage

Storage* -15°C to -25°C/1 year (Do not lower than -25°C)

Formulation Liquid in PBS containing 50% glycerol, 0.5% BSA and 0.02% sodium azide.

Basic Information

Clonality Polyclonal

Immunogen Information

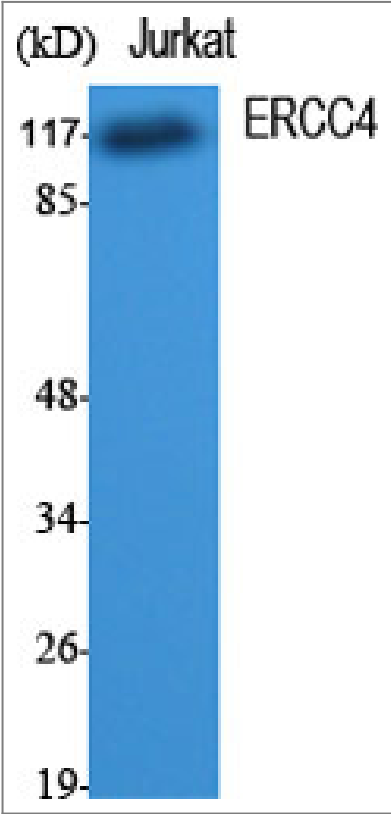
Immunogen The antiserum was produced against synthesized peptide derived from human XPF. AA range: 801-850

Specificity ERCC4 Polyclonal Antibody detects endogenous levels of ERCC4 protein.

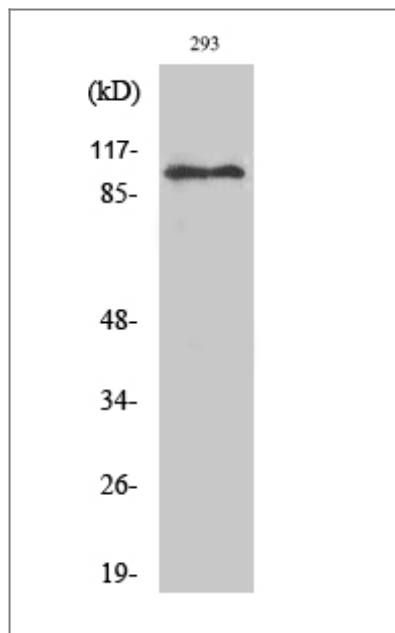
Target Information

Gene name	ERCC4		
Protein Name	DNA repair endonuclease XPF		
	Organism	Gene ID	UniProt ID
	Human	2072 ;	Q92889 ;
	Mouse	50505 ;	Q9QZD4 ;
Cellular Localization	Nucleus . Chromosome . Localizes to sites of DNA damage. .		
Tissue specificity	Epithelium,Fibroblast,		
Function	cofactor:Magnesium.,Disease:Defects in ERCC4 are a cause of XFE progeroid syndrome [MIM:610965]. This syndrome is illustrated by one patient who presented with dwarfism, cachexia and microcephaly.,Disease:Defects in ERCC4 are the cause of xeroderma pigmentosum complementation group F (XP-F) [MIM:278760]; also known as xeroderma pigmentosum VI (XP6). XP-F is an autosomal recessive disease characterized by hypersensitivity of the skin to sunlight followed by high incidence of skin cancer and frequent neurologic abnormalities.,Function:Structure-specific DNA repair endonuclease responsible for the 5-prime incision during DNA repair. Involved in homologous recombination that assists in removing interstrand cross-link.,similarity:Belongs to the XPF family.,subunit:Heterodimer composed of ERCC1 and XPF/ERCC4. Interacts with EME1.,		

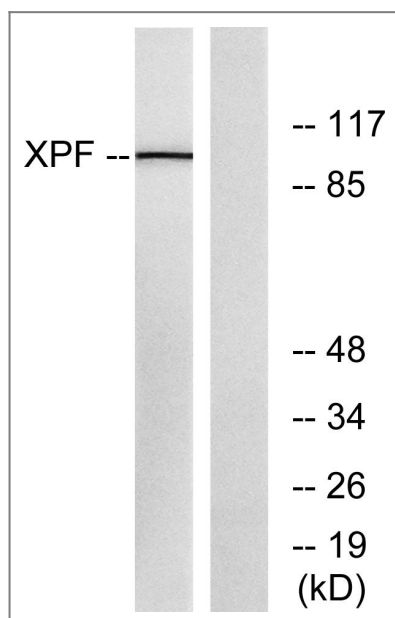
Validation Data



Western Blot analysis of various cells using ERCC4 Polyclonal Antibody cells nucleus extracted by Minute TM Cytoplasmic and Nuclear Fractionation kit (SC-003,Inventbiotech,MN,USA).



Western Blot analysis of 293 cells using ERCC4 Polyclonal Antibody cells nucleus extracted by Minute TM Cytoplasmic and Nuclear Fractionation kit (SC-003, Invent biotech, MN, USA).



Western blot analysis of lysates from 293 cells, using XPF Antibody. The lane on the right is blocked with the synthesized peptide.

Contact information

Orders: order@immunoway.com
 Support: tech@immunoway.com
 Telephone: 877-594-3616 (Toll Free), 408-747-0185
 Website: <http://www.immunoway.com>
 Address: 2200 Ringwood Ave San Jose, CA 95131 USA



Please scan the QR code to access additional product information:
ERCC4 Rabbit pAb