

Ephrin-A5 Rabbit pAb

CatalogNo: YT1593

Key Features

Host Species

- Rabbit

Reactivity

- Human, Mouse, Rat

Applications

- WB, IHC, IF, ELISA

MW

- 25kD (Observed)

Isotype

- IgG

Recommended Dilution Ratios

WB 1:500-1:2000

IHC 1:100-1:300

IF 1:200-1:1000

ELISA 1:40000

Not yet tested in other applications.

Storage

Storage*

-15°C to -25°C/1 year (Do not lower than -25°C)

Formulation

Liquid in PBS containing 50% glycerol, 0.5% BSA and 0.02% sodium azide.

Basic Information

Clonality

Polyclonal

Immunogen Information

Immunogen

The antiserum was produced against synthesized peptide derived from human EFNA5. AA range: 31-80

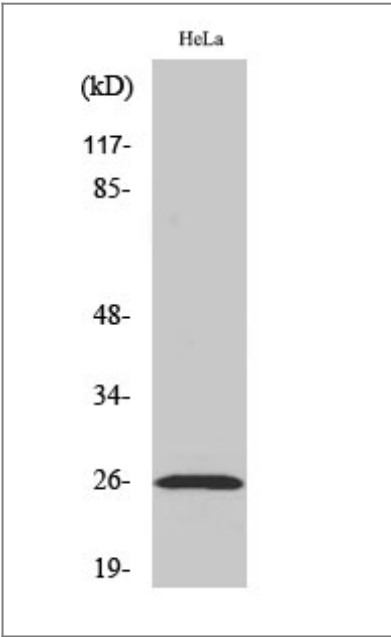
Specificity

Ephrin-A5 Polyclonal Antibody detects endogenous levels of Ephrin-A5 protein.

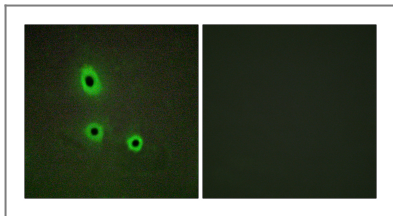
Target Information

Gene name	EFNA5		
Protein Name	Ephrin-A5		
	Organism	Gene ID	UniProt ID
	Human	1946 ;	P52803 ;
	Mouse	13640 ;	O08543 ;
	Rat	116683 ;	P97605 ;
Cellular Localization	Cell membrane ; Lipid-anchor, GPI-anchor . Membrane, caveola ; Lipid-anchor, GPI-anchor . Compartmentalized in discrete caveolae-like membrane microdomains.		
Tissue specificity	Brain,		
Function	Function:May function actively to stimulate axon fasciculation. Induces compartmentalized signaling within a caveolae-like membrane microdomain when bound to the extracellular domain of its cognate receptor. This signaling event requires the activity of the Fyn tyrosine kinase.,similarity:Belongs to the ephrin family.,subcellular location:Compartmentalized in discrete caveolae-like membrane microdomains.,subunit:Binds to EPHB2 (By similarity). Binds to the receptor tyrosine kinases EPHA2, EPHA3 and EPHB1.,		

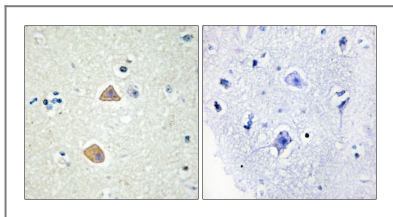
Validation Data



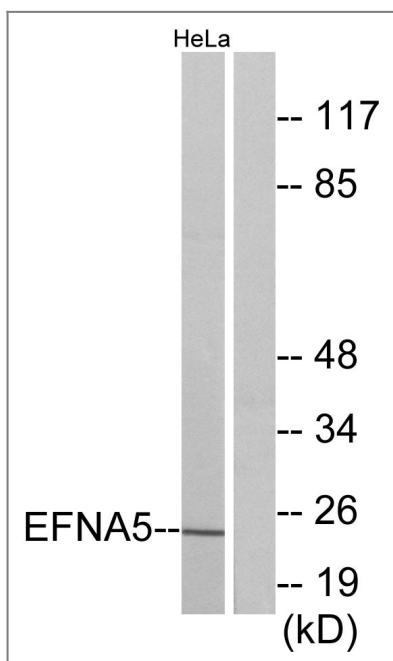
Western Blot analysis of various cells using Ephrin-A5 Polyclonal Antibody



Immunofluorescence analysis of A549 cells, using EFNA5 Antibody. The picture on the right is blocked with the synthesized peptide.



Immunohistochemistry analysis of paraffin-embedded human brain tissue, using EFNA5 Antibody. The picture on the right is blocked with the synthesized peptide.



Western blot analysis of lysates from HeLa cells, using EFNA5 Antibody. The lane on the right is blocked with the synthesized peptide.

Contact information

Orders: order@immunoway.com
 Support: tech@immunoway.com
 Telephone: 877-594-3616 (Toll Free), 408-747-0185
 Website: <http://www.immunoway.com>
 Address: 2200 Ringwood Ave San Jose, CA 95131 USA



Please scan the QR code to access additional product information:
Ephrin-A5 Rabbit pAb

For Research Use Only. Not for Use in Diagnostic Procedures.

[Antibody](#) | [ELISA Kits](#) | [Protein](#) | [Reagents](#)