

## Ephrin-A4 Rabbit pAb

CatalogNo: YT1592

### Key Features

#### Host Species

- Rabbit

#### Reactivity

- Human, Mouse

#### Applications

- WB, ELISA

#### MW

- 95kD (Observed)

#### Isotype

- IgG

### Recommended Dilution Ratios

**WB 1:500-1:2000**

**ELISA 1:40000**

**Not yet tested in other applications.**

### Storage

#### Storage\*

-15°C to -25°C/1 year (Do not lower than -25°C)

#### Formulation

Liquid in PBS containing 50% glycerol, 0.5% BSA and 0.02% sodium azide.

### Basic Information

#### Clonality

Polyclonal

### Immunogen Information

#### Immunogen

The antiserum was produced against synthesized peptide derived from human EFNA4. AA range: 131-180

#### Specificity

Ephrin-A4 Polyclonal Antibody detects endogenous levels of Ephrin-A4 protein.

### Target Information

Gene name EFNA4 EPLG4 LERK4

Protein Name Ephrin-A4

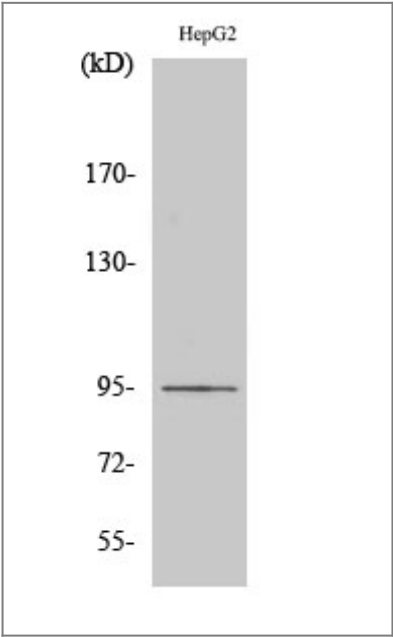
Organism	Gene ID	UniProt ID
Human	<a href="#">1945</a> ;	<a href="#">P52798</a> ;
Mouse	<a href="#">13639</a> ;	<a href="#">O08542</a> ;

Cellular Localization [Isoform 1]: Cell membrane; Lipid-anchor, GPI-anchor.; [Isoform 2]: Secreted .

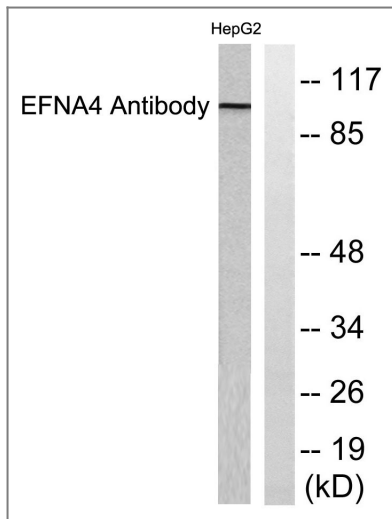
Tissue specificity Expressed in the adult spleen, lymph node, prostate, ovary, small intestine, and colon, and in fetal heart, lung, liver and kidney. Also detected in hematopoietic cell lines.

Function Function:May play a role in the interaction between activated B lymphocytes and dendritic cells in tonsils.,similarity:Belongs to the ephrin family.,tissue specificity:Expressed in the adult spleen, lymph node, prostate, ovary, small intestine, and colon, and in fetal heart, lung, liver and kidney. Also detected in hematopoietic cell lines.,

Validation Data



Western Blot analysis of various cells using Ephrin-A4 Polyclonal Antibody diluted at 1:500



Western blot analysis of lysates from HepG2 cells, using EFNA4 Antibody. The lane on the right is blocked with the synthesized peptide.

## Contact information

Orders: [order@immunoway.com](mailto:order@immunoway.com)  
 Support: [tech@immunoway.com](mailto:tech@immunoway.com)  
 Telephone: 877-594-3616 (Toll Free), 408-747-0185  
 Website: <http://www.immunoway.com>  
 Address: 2200 Ringwood Ave San Jose, CA 95131 USA



Please scan the QR code to access additional product information:  
**Ephrin-A4 Rabbit pAb**

For Research Use Only. Not for Use in Diagnostic Procedures.

[Antibody](#) | [ELISA Kits](#) | [Protein](#) | [Reagents](#)